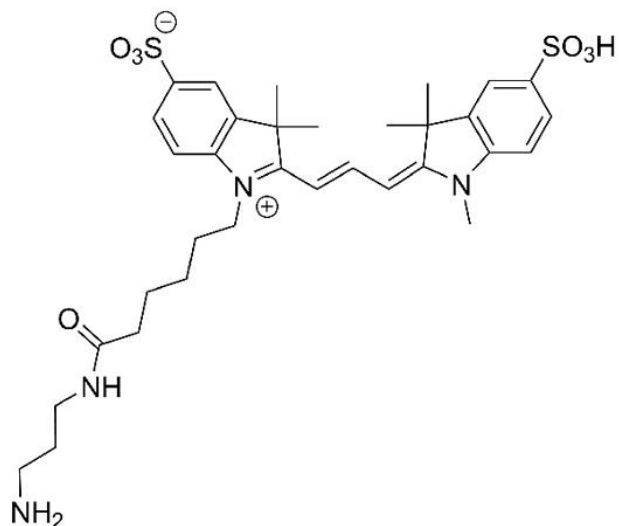


# CY3 AMINE

SKU: FP-1303



## Description

**488/532**



Laser  
line

**TRITC**



Common  
filter set

**555**



Excitation  
max

**580**



Emission  
max

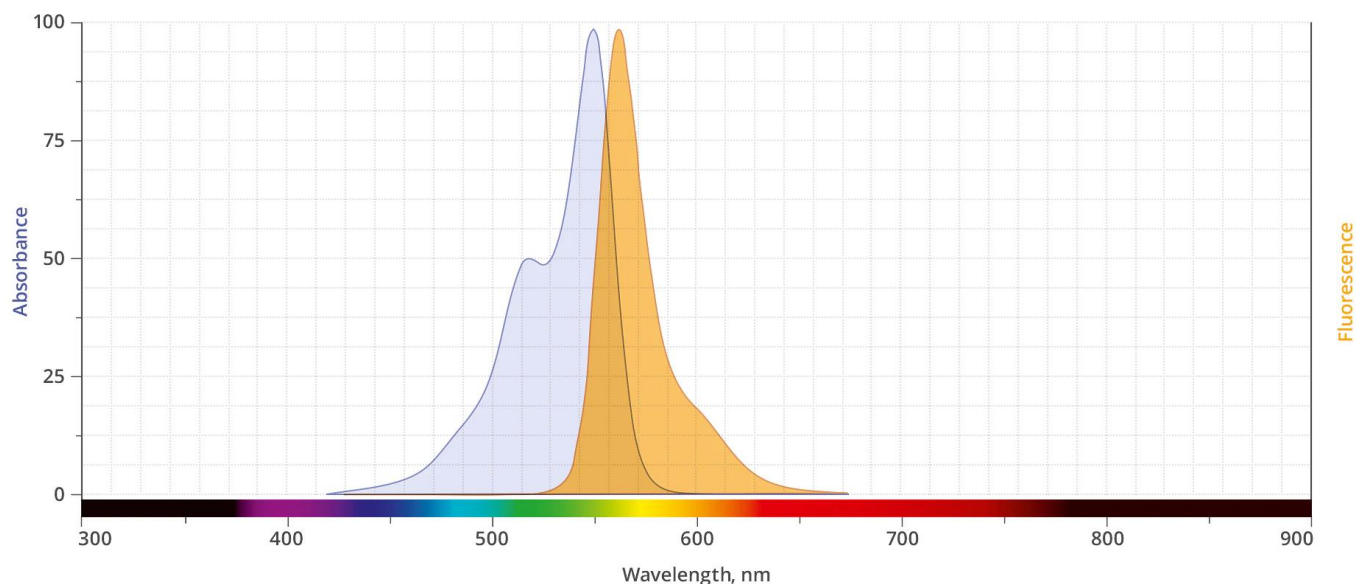
Cy3 Amine is a carbonyl reactive building block used to modify carboxylic groups in the presence of activators (e.g. EDC, or DCC) or activated esters (e.g. NHS esters) through a stable amide bond. It also can be employed as a polar tracer and as a reactive dye for labeling proteins via a carboxylic acid moiety.

Cy3 Amine (also sold under Sulfo-Cyanine3 Amine) is a bright, water-soluble, and pH insensitive from pH 4 to pH 10 orange-fluorescent dye. Cy3 conjugates of antibodies, peptides, and

**For research use only. Not intended for animal or human therapeutic or diagnostic use.**

proteins can be excited using the 532 nm or 555 nm laser line and visualized with TRITC (tetramethylrhodamine) filter sets. Cy3 conjugates give less background than TAMRA and most other commonly used fluorescent dyes.

## Abs/Em Spectra



## Specifications

<b>Unit Size</b>	1 mg, 5 mg, 25 mg, 100 mg
<b>Reactivity</b>	Aldehyde, carboxylic acid, ketone
<b>Abs/Em Maxima</b>	555/572 nm
<b>Extinction coefficient</b>	150,000 cm <sup>-1</sup> M <sup>-1</sup>
<b>Solubility</b>	Water, DMSO, DMF
<b>Spectrally similar dyes</b>	Cy3, DyLight® 555, Alexa Fluor® 555
<b>Molecular weight</b>	672.86
<b>Storage Conditions</b>	-20°C.
<b>Shipping Conditions</b>	Ambient temperature

**For research use only. Not intended for animal or human therapeutic or diagnostic use.**