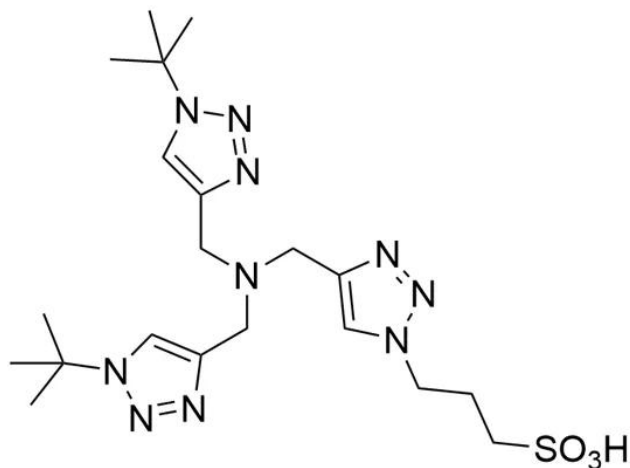


BTES

SKU: CCT-1237



Description

BTES is a newest generation, water-soluble accelerating ligand for CuAAC that provides much greater rate enhancement compared to previous generation ligands (e.g. THPTA or TBTA). More importantly, it minimizes perturbations to the physiological state of the cells or organisms probed and allows for effective bioconjugation with suppressed cell cytotoxicity by further lowering Cu loading in the catalyst formulation.

Specifications

Unit Size	100 mg, 500 mg, 1000 mg
Molecular weight	494.62
Chemical composition	C20H34N10O3
CAS	N/A
Solubility	Water, DMSO, DMF, MeOH
Purity	>95% (HPLC)
Appearance	Off-white to grey solid
Storage Conditions	4°C.
Shipping Conditions	Ambient temperature

For research use only. Not intended for animal or human therapeutic or diagnostic use.

For research use only. Not intended for animal or human therapeutic or diagnostic use.