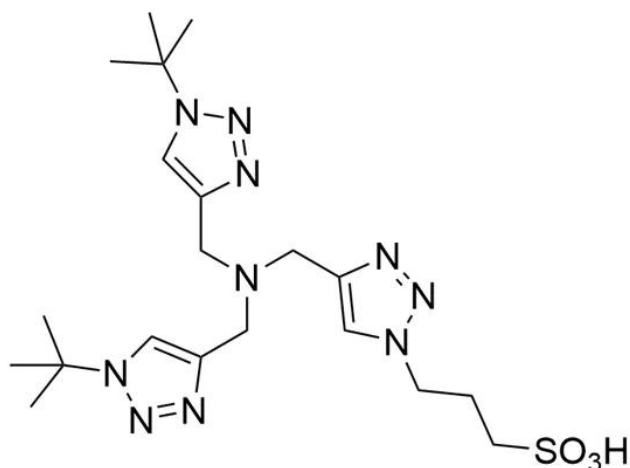




## BTES

SKU: CCT-1237



## DESCRIPTION

BTES is a newest generation, water-soluble accelerating ligand for CuAAC that provides much greater rate enhancement compared to previous generation ligands (e.g. THPTA or TBTA). More importantly, it minimizes perturbations to the physiological state of the cells or organisms probed and allows for effective bioconjugation with suppressed cell cytotoxicity by further lowering Cu loading in the catalyst formulation.

## SPECIFICATIONS

<b>CAS Number</b>	N/A
<b>Molecular Weight</b>	494.62
<b>Appearance</b>	Off-white to grey solid
<b>Chemical Formula</b>	C <sub>20</sub> H <sub>34</sub> N <sub>10</sub> O <sub>3</sub>
<b>Purity</b>	>95% (HPLC)
<b>Unit Size</b>	100 mg, 500 mg, 1000 mg

For research use only. Not intended for therapeutic or diagnostic use in animals or humans.



<b>Solubility</b>	Water, DMSO, DMF, MeOH
<b>Storage Instructions</b>	4°C.
<b>Shipping Conditions</b>	Ambient temperature
<b>Shipping Instructions</b>	Ambient temperature

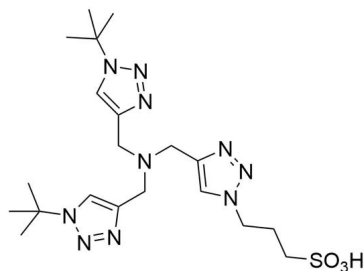
## SELECTED REFERENCES

1. Banerjee, C., *et al.* (2022). Visualizing the Conformational Dynamics of Membrane Receptors Using Single-Molecule FRET. *J Vis Exp.*, 186. [[PubMed](#)]
2. Schamber, M. R., *et al.* (2022). Conformational fingerprinting of allosteric modulators in metabotropic glutamate receptor 2. *Elife*, 11:e78982. [[PubMed](#)]
3. Schamber, M. R., *et al.* (2022). Mechanism of sensitivity modulation in the calcium-sensing receptor via electrostatic tuning. *Nat Commun.*, **13 (1)**, 2194. [[PubMed](#)]
4. BSoriano del Amo, D., *et al.* (2010). Biocompatible copper(I) catalysts for in vivo imaging of glycans *J. Am. Chem. Soc.*, **132(47)**: 16893–9. [[PubMed](#)]

## DOCUMENTS

- [Safety Data Sheet](#)
- [Download CoA](#)
- [Datasheet](#)

## GALLERY IMAGES



For research use only. Not intended for therapeutic or diagnostic use in animals or humans.