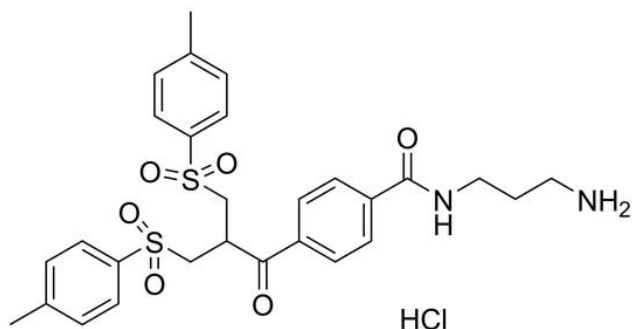


BIS-SULFONE AMINE

SKU: CCT-1148



Description

Bis-sulfone Amine is a bis-alkylating labeling reagent that is selective for the cysteine sulfur atoms from a native disulfide. These reagents undergo bis-alkylation to conjugate both thiols derived from the two cysteine residues of a reduced native disulfide bond such as the interchain disulfide bonds of an antibody. The reaction results in covalent rebridging of the disulfide bond via a three carbon bridge leaving the protein structurally intact.

The covalent, site-specific conjugation of PEG to a polyhistidine tag (His-tag) on a protein with bis-alkylating reagents was also reported in literature (see Selected References section).

Specifications

Unit Size	1000 mg, 5 g
Molecular weight	593.15 (HCl salt)
Chemical composition	C ₂₈ H ₃₃ CIN ₂ O ₆ S ₂
CAS	N/A
Solubility	DMSO, DMF, DCM, THF, Chloroform
Purity	>95% (HPLC)
Appearance	Grey amorphous solid
Storage Conditions	-20°C. Desiccate

For research use only. Not intended for animal or human therapeutic or diagnostic use.

Shipping Conditions

Ambient temperature

For research use only. Not intended for animal or human therapeutic or diagnostic use.