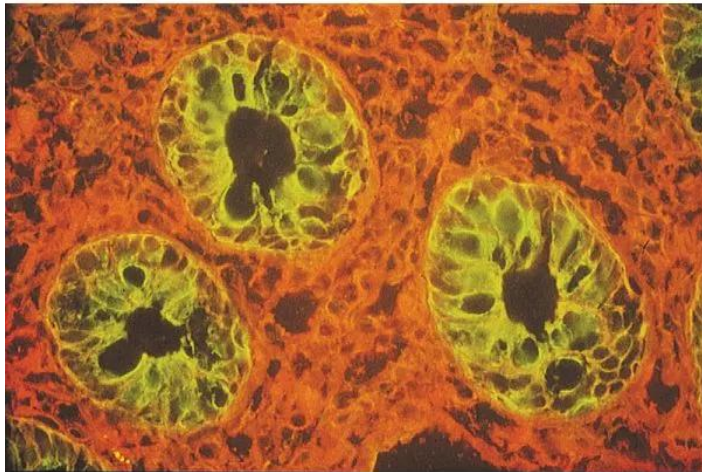




LYCOPERSICON ESCULENTUM (TOMATO) LECTIN (LEL, TL), BIOTINYLATED

SKU: B-1175-1



DESCRIPTION

Tomato lectin, although sharing some specificities with potato lectin, Datura lectin, and wheat germ agglutinin, has been reported to be dissimilar in many respects. LEL binds well to glycophorin and Tamm-Horsfall glycoprotein and has been used effectively to label vascular endothelium in rodents.

Biotinylated tomato lectin has an appropriate number of biotins bound to provide the optimum staining characteristics for this lectin. This conjugate is supplied essentially free of unconjugated biotins and is preserved with sodium azide.

SPECIFICATIONS

Molecular Weight	71
-------------------------	----

For research use only. Not intended for therapeutic or diagnostic use in animals or humans.



Extinction Coefficient	0.76
Formulation	10 mM HEPES, pH 7.5, 0.15 M NaCl, 0.08% sodium azide, 0.1 mM CaCl ₂
Inhibiting or Eluting Sugar	Chitin Hydrolysate
Unit Size	1 mg
Storage Instructions	2-8 °C; Store frozen for long term storage
Sugar Specificity	Chitin oligomers, type 2 polyLacNAc, and Type 2 LacdiNAc
Usage Summary	For most applications, we recommend a freshly prepared working solution of 5-20 µg/ml in the below buffer.
Applications	Immunohistochemistry / Immunocytochemistry, Immunofluorescence, Blotting Applications, Elispot, ELISAs, Glycobiology
Concentration	2 mg active conjugate/ml
Conjugate	Biotinylated

TECHNICAL INFORMATION

Tomato lectin is a very stable single subunit glycoprotein containing about 50 percent arabinose and galactose and may form multimeric aggregates in solution.

This biotinylated lectin is an ideal intermediate for examining glycoconjugates using the Biotin-Avidin/Streptavidin System. First the biotinylated lectin is added, followed by the VECTASTAIN[®] ABC Reagent, Avidin D conjugate, or streptavidin derivative.

Inhibiting/Eluting Sugar: Chitin Hydrolysate

CITATIONS



Powered by Bioz © 2023 See more details on Bioz

DOCUMENTS

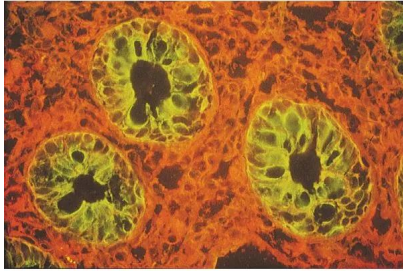
- [Safety Data Sheet](#)

For research use only. Not intended for therapeutic or diagnostic use in animals or humans.



- [Lectins in Histochemistry, ELISA, and Western Blot Applications](#)
- [Download CoA](#)
- [Datasheet](#)

GALLERY IMAGES



For research use only. Not intended for therapeutic or diagnostic use in animals or humans.