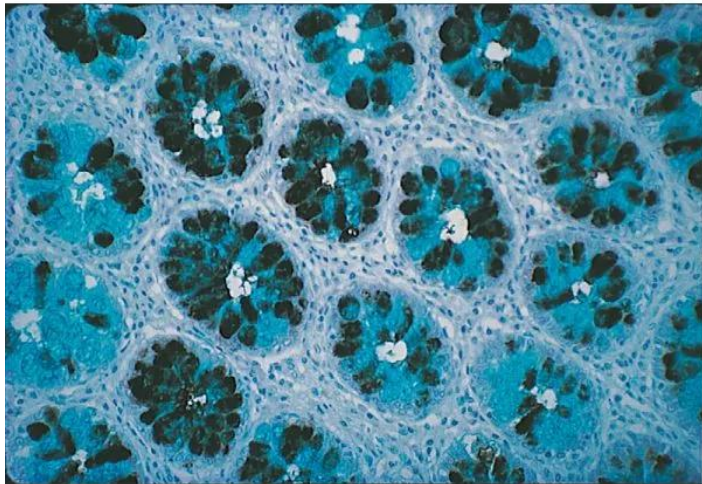




## **DOLICHOS BIFLORUS AGGLUTININ (DBA), BIOTINYLATED**

**SKU:** B-1035-5



---

### **DESCRIPTION**

This lectin has a carbohydrate specificity toward  $\alpha$ -linked N-acetylgalactosamine. It has been used to establish secretor status in blood group A individuals by hemagglutination inhibition techniques and for blood typing. This lectin has also been used as a general marker of developing renal collecting ducts.

Biotinylated *Dolichos biflorus* agglutinin has an appropriate number of biotins bound to provide the optimum staining characteristics for this lectin. This conjugate is supplied essentially free of unconjugated biotins and is preserved with sodium azide.

### **SPECIFICATIONS**

<b>Molecular Weight</b>	111
-------------------------	-----

**For research use only. Not intended for therapeutic or diagnostic use in animals or humans.**



<b>Extinction Coefficient</b>	1.22
<b>Formulation</b>	10 mM HEPES, 0.15 M NaCl, pH 7.5, 0.08% sodium azide, 0.1 mM CaCl <sub>2</sub> .
<b>Inhibiting or Eluting Sugar</b>	GalNAc
<b>Unit Size</b>	5 mg
<b>Storage Instructions</b>	2-8 °C; Store frozen for long term storage
<b>Sugar Specificity</b>	Forssman antigen and GM2
<b>Usage Summary</b>	For most applications we recommend a freshly prepared working solution of 5-20 µg/ml in the below buffer.
<b>Applications</b>	Immunohistochemistry / Immunocytochemistry, Immunofluorescence, Blotting Applications, Elispot, ELISAs, Glycobiology
<b>Concentration</b>	5 mg active conjugate/ml
<b>Conjugate</b>	Biotinylated

## TECHNICAL INFORMATION

*Dolichos biflorus* agglutinin is a glycoprotein with a molecular weight of about 111 kDa and consists of 4 subunits of approximately equal size.

This biotinylated lectin is an ideal intermediate for examining glycoconjugates using the Biotin-Avidin/Streptavidin System. First the biotinylated lectin is added, followed by the VECTASTAIN ABC Reagent, Avidin D conjugate, or streptavidin derivative.

Inhibiting/Eluting Sugar: 200 mM N-acetylgalactosamine

## CITATIONS



Powered by Bioz © 2023 See more details on Bioz

## DOCUMENTS

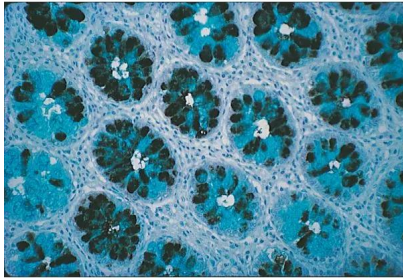
- [Safety Data Sheet](#)

**For research use only. Not intended for therapeutic or diagnostic use in animals or humans.**



- [Lectins in Histochemistry, ELISA, and Western Blot Applications](#)
- [Download CoA](#)
- [Datasheet](#)

## GALLERY IMAGES



**For research use only. Not intended for therapeutic or diagnostic use in animals or humans.**