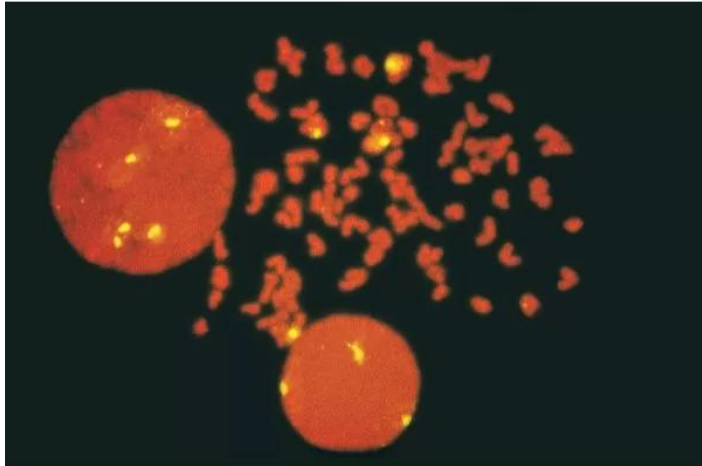




GOAT ANTI-FLUORESCEIN

SKU: BA-0601-.5



DESCRIPTION

Fluorescein is not found in biological systems. This green fluorescent label can be directly visualized or used as a specific tag and detected with our high affinity, purified antibody reagents. Labeled probes can be used in applications such as *in situ* hybridization and blotting.

SPECIFICATIONS

Format	Concentrate
Formulation	10 mM sodium phosphate, 0.15 M NaCl, pH 7.8, 0.08% sodium azide, 3 mg/ml bovine serum albumin.
Unit Size	0.5 mg
Storage Instructions	2-8 °C

For research use only. Not intended for therapeutic or diagnostic use in animals or humans.



Usage Summary

The recommended concentration range for use is 2 – 10 µg/ml. If this biotinylated antibody is to be used in tissues, which may contain cross-reacting endogenous immunoglobulins, dilution of this biotinylated antibody may be made in buffers containing 2% normal serum from the same species as the tissue.

Applications

In situ hybridization, Blotting Applications

Concentration

0.5 mg active conjugate/ml

Conjugate

Biotinylated

Reactive Species

Goat

Host Species

Goat

CITATIONS

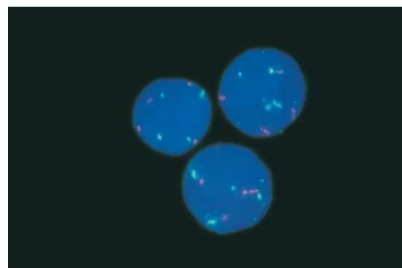


Powered by Bioz © 2023 See more details on Bioz

DOCUMENTS

- [Fluorescence Detection of Biotin-Labeled ISH Probes - Protocol](#)
- [In Situ Hybridization Detection Protocol](#)
- [Safety Data Sheet](#)
- [Download CoA](#)
- [Datasheet](#)

GALLERY IMAGES



For research use only. Not intended for therapeutic or diagnostic use in animals or humans.