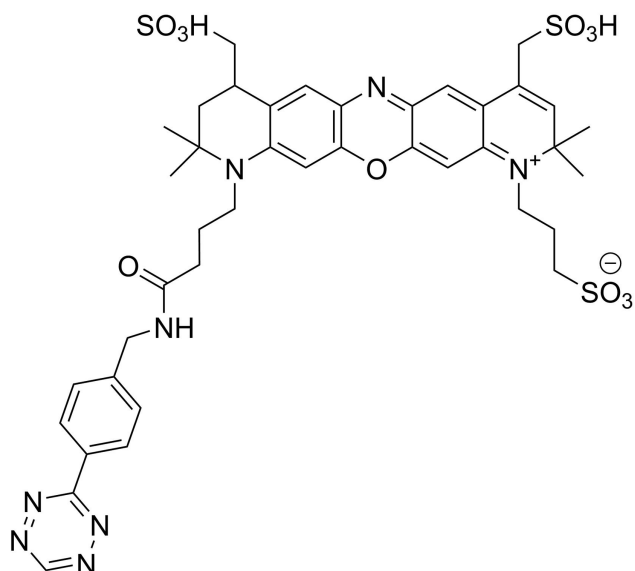


AZDYE 680R TETRAZINE

SKU: CCT-1505

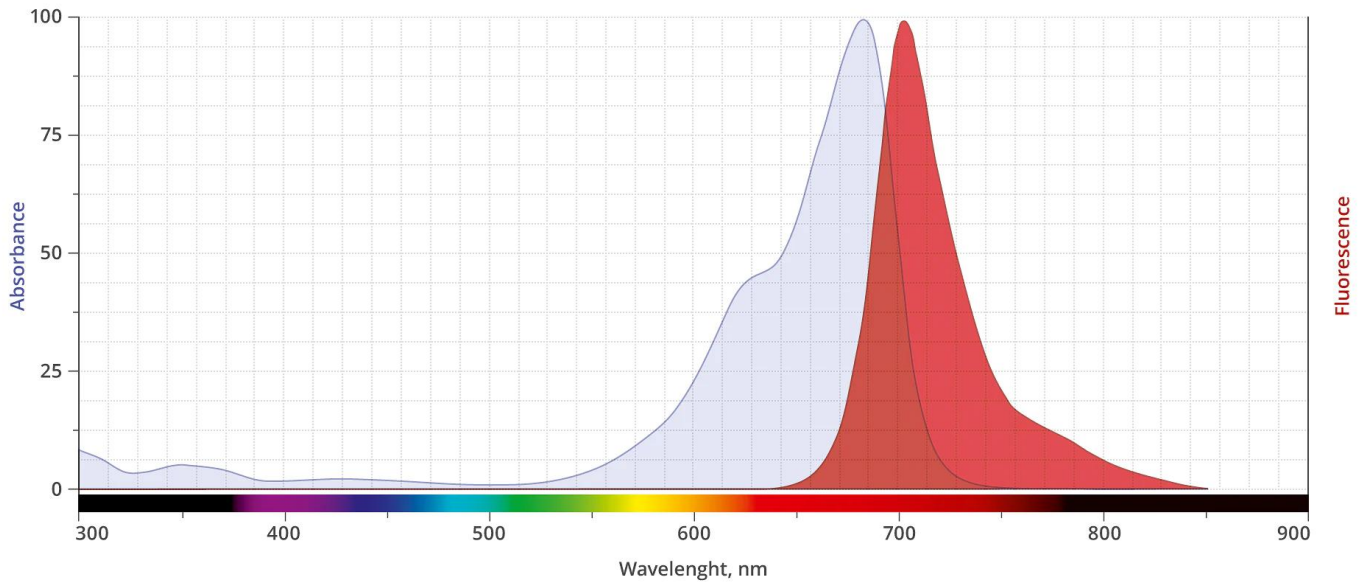
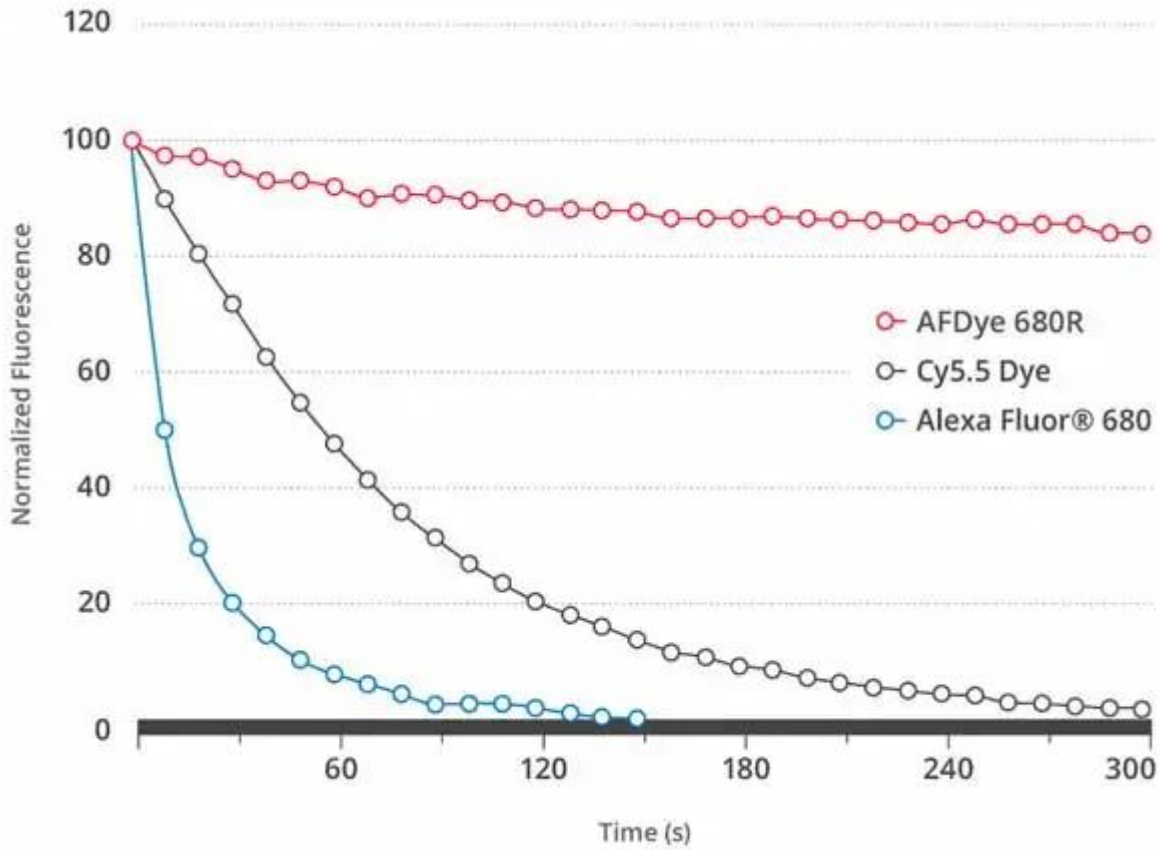


Description

Tetrazines demonstrate exceptionally fast cycloaddition kinetics (up to 30 000 M⁻¹ s⁻¹) with trans-cyclooctenes (TCO) as the dienophile, the fastest kinetics ever reported for any bioorthogonal reaction. In addition, inverse-Electron-Demand Diels-Alder reaction of tetrazines trans-cyclooctene forms a stable covalent bond and does not require Cu-catalyst or elevated temperatures.

AZDye 680R is a bright and photostable near IR dye that emits fluorescence at about 700 nm in the borderline spectral region between far-red and near-IR. AZDye 680R dye is water soluble and pH-insensitive from pH 4 to pH 10. AZDye 680R is a rhodamine-based dye, and like rhodamine dyes in general, it is very bright and exceptionally photostable (Figure 1). The superior photostability and excellent brightness of AZDye 680R makes this dye an ideal for confocal microscopy, single molecule imaging and other applications that demand both brightness and photostability.

For research use only. Not intended for animal or human therapeutic or diagnostic use.



Abs/Em Spectra

For research use only. Not intended for animal or human therapeutic or diagnostic use.

Specifications

Unit Size	1 mg, 5 mg, 25 mg
Abs/Em Maxima	685/708 nm
Extinction Coefficient	135,000
Flow Cytometry Laser Line	633 or 635 nm
Microscopy Laser Line	633 or 635 nm
Spectrally Similar Dyes	Alexa Fluor® 680, CF® 680R
Molecular weight	911.03
CAS	N/A
Solubility	Water, DMSO, DMF
Purity	>95% (HPLC)
Appearance	Blue solid
Storage Conditions	-20°C. Desiccate
Shipping Conditions	Ambient temperature

For research use only. Not intended for animal or human therapeutic or diagnostic use.