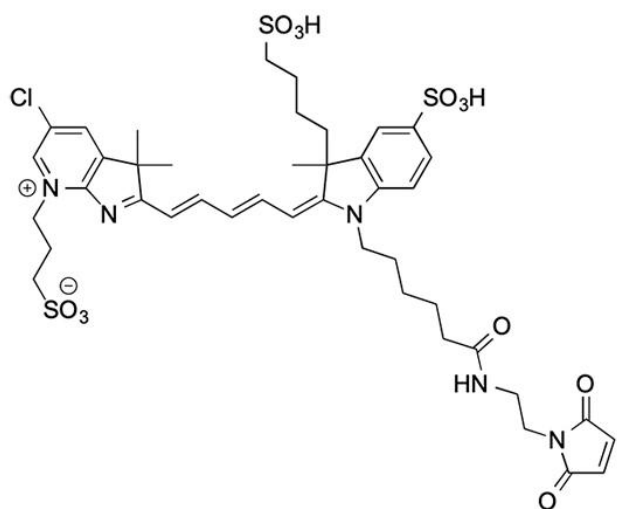


# AZDYE 680 MALEIMIDE

SKU: FP-1723



## Description

633/647



Laser  
line

Cy5.5



Common  
filter set

673



Excitation  
max

694



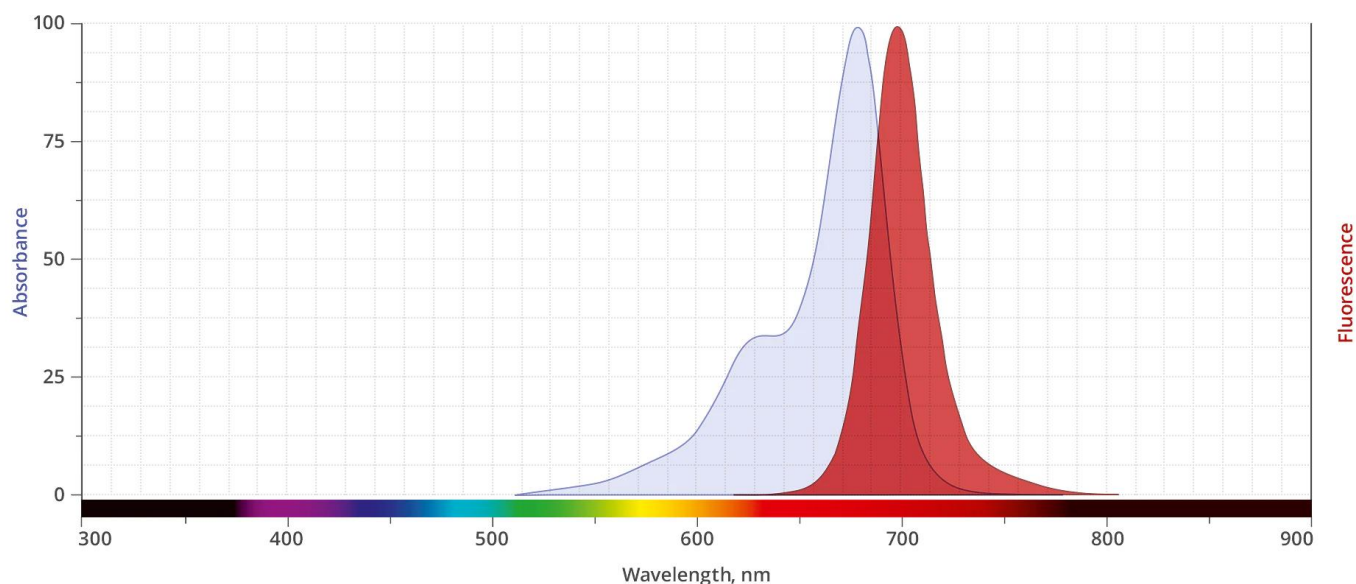
Emission  
max

AZDye 680 is a bright and photostable near-IR dye that is spectrally identical to Alexa Fluor® 680 and IRDye® 680RD. AZDye 680 is often used for small animal imaging applications in the 700 nm wavelength and provides excellent clearance profiles in animals. Flow cytometry is another common application for this dye. AZDye 680 ideally suited for the 633 nm laser line. This near-IR fluorescent dye is water soluble and pH-insensitive from pH 4 to pH 10. AZDye 680 molecules can be attached to proteins at high molar ratios without significant self-quenching, leading to brighter conjugates and more sensitive detection. The long wavelength emission

**For research use only. Not intended for animal or human therapeutic or diagnostic use.**

allows for detection in complex samples with auto-fluorescent background signals.

Maleimide is the most popular sulfhydryl-reactive reactive group for conjugating the dye to a thiol group on a protein, oligonucleotide thiophosphate, or low molecular weight ligand. The maleimide group specifically and efficiently reacts with reduced thiols (sulfhydryl groups, -SH) at pH 6.5 to 7.5 to form stable thioether bonds.



Abs/Em Spectra

## Specifications

<b>Unit Size</b>	1 mg, 5 mg, 25 mg, 100 mg
<b>Reactivity</b>	Thiol (Cys)
<b>Abs/Em Maxima</b>	678/701 nm
<b>Extinction coefficient</b>	185,000 cm <sup>-1</sup> M <sup>-1</sup>
<b>Solubility</b>	Water, DMSO, DMF
<b>Spectrally similar dyes</b>	Alexa Fluor® 680, DyLight® 680, IRDye® 680
<b>Molecular weight</b>	950.53
<b>Storage Conditions</b>	-20°C.
<b>Shipping Conditions</b>	Ambient temperature

**For research use only. Not intended for animal or human therapeutic or diagnostic use.**

**For research use only. Not intended for animal or human therapeutic or diagnostic use.**