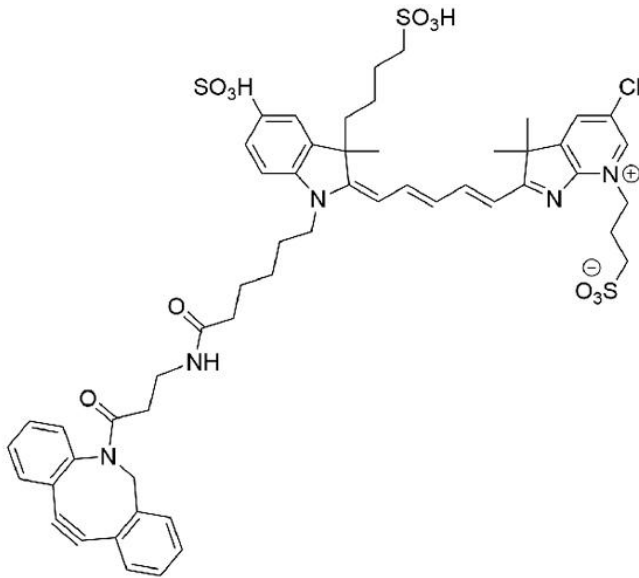


AZDYE 680 DBCO

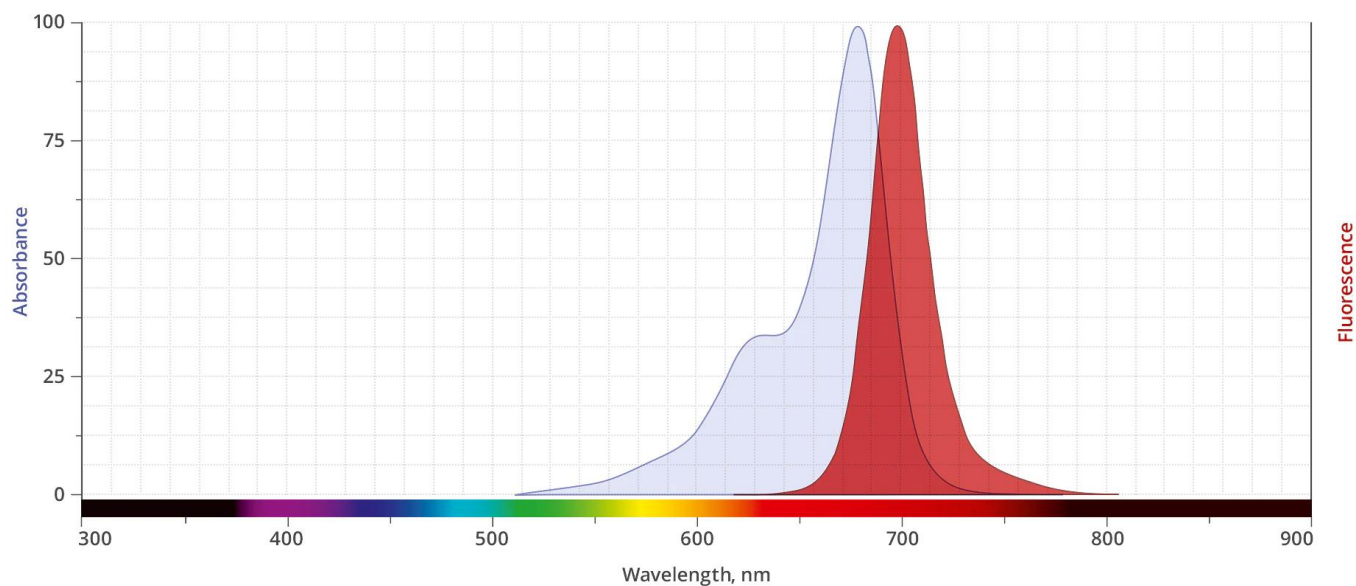
SKU: CCT-1513



Description

AZDye 680 is a bright and photostable near-IR dye that is spectrally identical to Alexa Fluor® 680, IRDye® 680RD and Cy5.5. AZDye 680 is often used for small animal imaging applications in the 700 nm wavelength and provides excellent clearance profiles in animals. Flow cytometry is another common application for this dye. AZDye 680 ideally suited for the 633 nm laser line. This near-IR fluorescent dye is water soluble and pH-insensitive from pH 4 to pH 10. The long wavelength emission allows for detection in complex samples with auto-fluorescent background signals.

For research use only. Not intended for animal or human therapeutic or diagnostic use.



Abs/Em Spectra

Specifications

Unit Size	1 mg, 5 mg, 25 mg, 100 mg
Abs/Em Maxima	678/701 nm
Extinction Coefficient	185,000
Spectrally Similar Dyes	Alexa Fluor® 680, IRDye® 680RD, CF™ 680 Dye
Molecular weight	1086.73 (protonated)
CAS	N/A
Solubility	Water, DMSO, DMF
Appearance	Blue solid
Storage Conditions	-20°C. Desiccate
Shipping Conditions	Ambient temperature

For research use only. Not intended for animal or human therapeutic or diagnostic use.