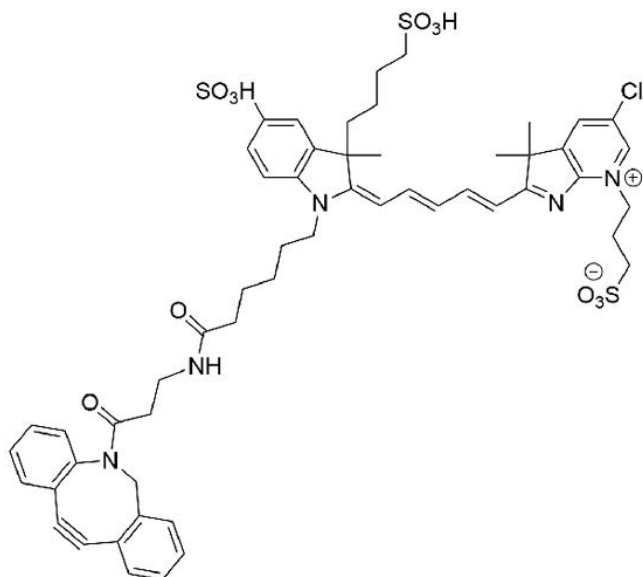




## **AZDYE 680 DBCO**

**SKU:** CCT-1513



---

## **DESCRIPTION**

AZDye 680 is a bright and photostable near-IR dye that is spectrally identical to Alexa Fluor® 680, IRDye® 680RD and Cy5.5. AZDye 680 is often used for small animal imaging applications in the 700 nm wavelength and provides excellent clearance profiles in animals. Flow cytometry is another common application for this dye. AZDye 680 ideally suited for the 633 nm laser line. This near-IR fluorescent dye is water soluble and pH-insensitive from pH 4 to pH 10. The long wavelength emission allows for detection in complex samples with auto-fluorescent background signals.

## **SPECIFICATIONS**

**CAS Number**

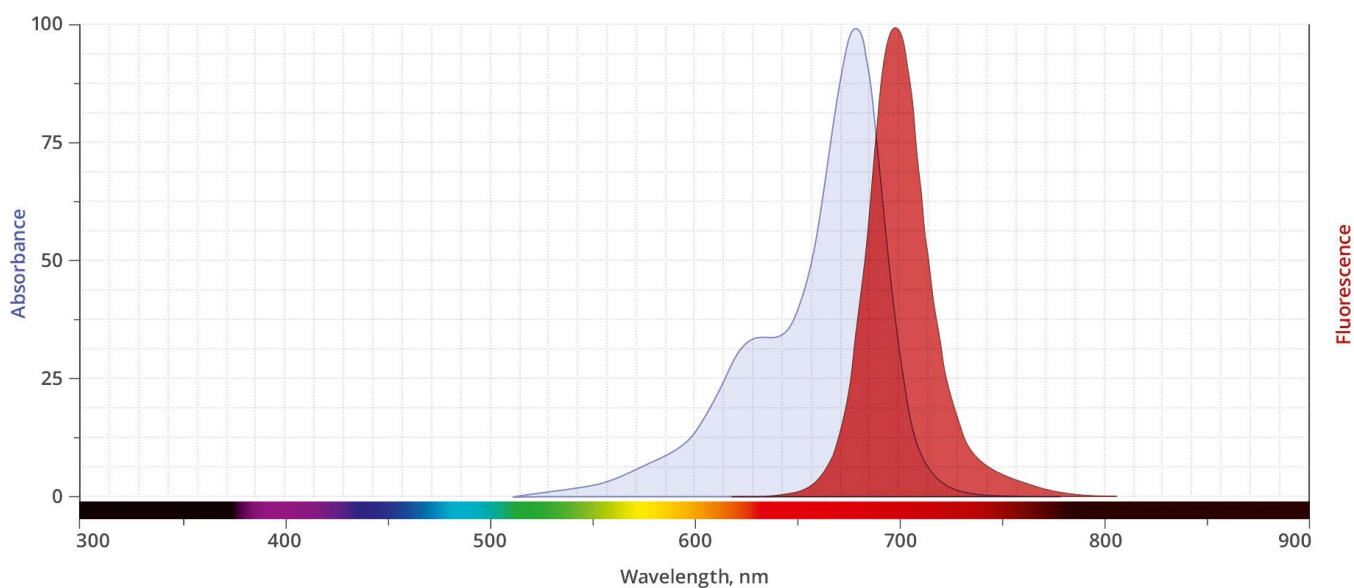
N/A

**For research use only. Not intended for therapeutic or diagnostic use in animals or humans.**



<b>Molecular Weight</b>	1086.73 (protonated)
<b>Appearance</b>	Blue solid
<b>Extinction Coefficient</b>	185,000
<b>Unit Size</b>	1 mg, 5 mg, 25 mg, 100 mg
<b>Solubility</b>	Water, DMSO, DMF
<b>Storage Instructions</b>	-20°C. Desiccate
<b>Spectrally Similar Dyes</b>	Alexa Fluor® 680, IRDye® 680RD, CF™ 680 Dye
<b>Excitation/Emission Maximum</b>	678/701 nm
<b>Shipping Conditions</b>	Ambient temperature
<b>Shipping Instructions</b>	Ambient temperature

## ABS/EM SPECTRA



## DOCUMENTS

- [Safety Data Sheet](#)
- [Datasheet](#)

**For research use only. Not intended for therapeutic or diagnostic use in animals or humans.**

