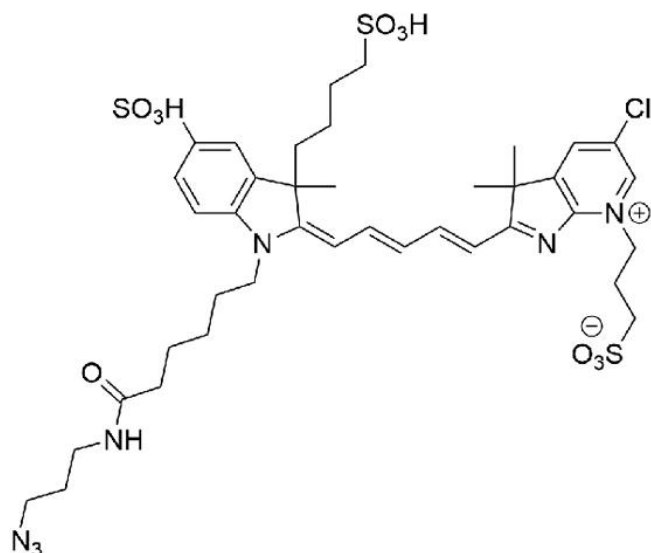


# AZDYE 680 AZIDE

**SKU:** CCT-1510

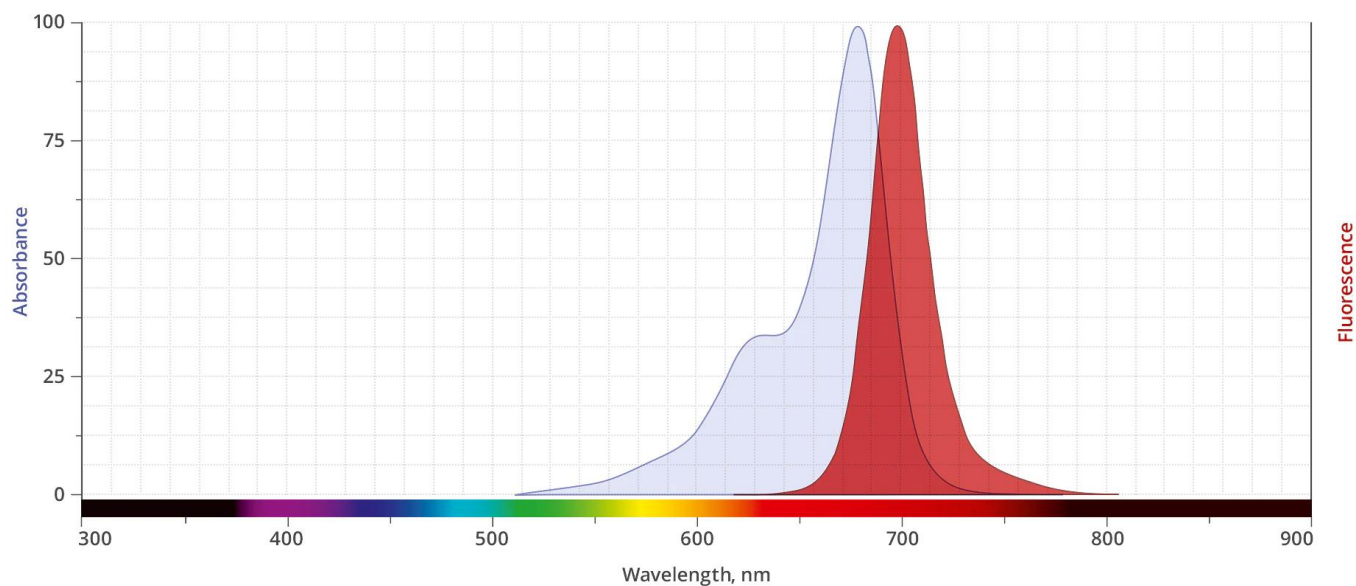


## Description

AZDye 680 is a bright and photostable near-IR dye that is spectrally identical to Alexa Fluor® 680 and IRDye® 680RD. AZDye 680 is often used for small animal imaging applications in the 700 nm wavelength and provides excellent clearance profiles in animals. Flow cytometry is another common application for this dye. AZDye 680 is ideally suited for the 633 nm laser line.

Alexa Fluor® is a registered trademark of Thermo Fisher Scientific.

**For research use only. Not intended for animal or human therapeutic or diagnostic use.**



Abs/Em Spectra

## Specifications

<b>Unit Size</b>	1 mg, 5 mg, 25 mg, 100 mg
<b>Abs/Em Maxima</b>	678/701 nm
<b>Extinction Coefficient</b>	185,000
<b>Flow Cytometry Laser Line</b>	633 nm or 647 nm
<b>Microscopy Laser Line</b>	633 nm or 647 nm
<b>Spectrally Similar Dyes</b>	Alexa Fluor® 680, IRDye® 680RD, CF™ 680 Dye
<b>Molecular weight</b>	910.51 (protonated)
<b>CAS</b>	N/A
<b>Solubility</b>	Water, DMSO, DMF
<b>Purity</b>	>95% (HPLC)
<b>Appearance</b>	Blue solid
<b>Storage Conditions</b>	-20°C. Desiccate
<b>Shipping Conditions</b>	Ambient temperature

**For research use only. Not intended for animal or human therapeutic or diagnostic use.**