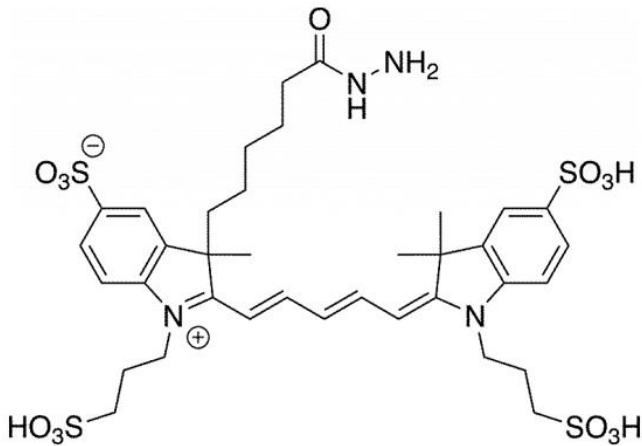




# AZDYE 647 HYDRAZIDE

SKU: FP-1128



## DESCRIPTION

633/647



Laser  
line

Cy5



Common  
filter set

650



Excitation  
max

665



Emission  
max

AZDye™ 647 Hydrazide is a bright, far-red-fluorescent dye that often used for labeling aldehydes or ketones in polysaccharides or glycoproteins. AZDye™ 488 Hydrazide is useful as low molecular weight, membrane-impermeant, aldehyde-fixable cell tracers, exhibiting brighter fluorescence and greater photostability than cell tracers derived from other spectrally similar fluorophores.

**For research use only. Not intended for therapeutic or diagnostic use in animals or humans.**



AZDye™ 647 (Alexa Fluor® 647 analog) is a water-soluble, bright, far-red-fluorescent dye with excitation ideally suited for the 633 nm or 647 nm laser lines. A significant advantage to using long wavelength dyes such as Cy5 or AZDye™ 647 dye over other fluorophores is the low autofluorescence of biological specimens in this region of the spectrum.

AZDye™ 647 is structurally similar to Alexa Fluor® 647, and spectrally is almost identical to Cy5 Dye, Alexa Fluor® 647, CF® 647 Dye, or any other Cyanine5 based fluorescent dyes.

## SPECIFICATIONS

<b>Molecular Weight</b>	873.04
<b>Extinction Coefficient</b>	270,000 cm <sup>-1</sup> M <sup>-1</sup>
<b>Reactivity</b>	Primary amine
<b>Unit Size</b>	1 mg, 5 mg, 25 mg, 100 mg
<b>Solubility</b>	Water, DMSO, DMF
<b>Storage Instructions</b>	-20°C.
<b>Spectrally Similar Dyes</b>	Cy5, DyLight® 649
<b>Excitation/Emission Maximum</b>	649/671 nm
<b>Shipping Conditions</b>	Ambient temperature
<b>Shipping Instructions</b>	Ambient temperature

## ABS/EM SPECTRA

**For research use only. Not intended for therapeutic or diagnostic use in animals or humans.**

