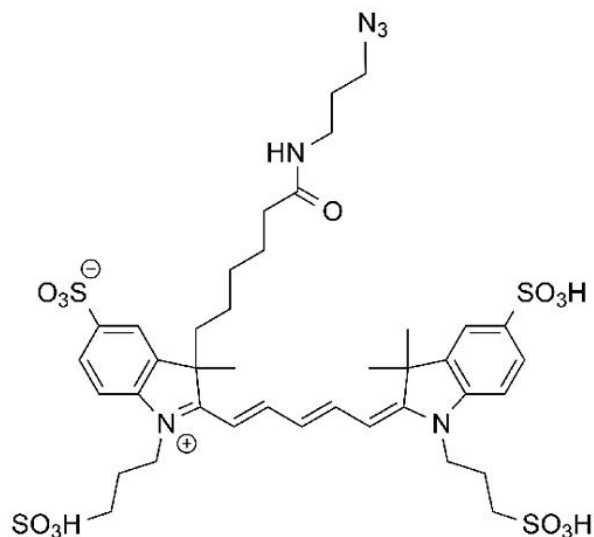




AZDYE 647 AZIDE

SKU: CCT-1299



DESCRIPTION

AZDye™ 647 Azide is a water-soluble, pH-insensitive from pH 4 to pH 10, far-red-fluorescent probe with excitation ideally suited for the 633 nm or 647 nm laser lines. A significant advantage to using long wavelength dyes such as Cy5 or AZDye™ 647 over other fluorophores is the low autofluorescence of biological specimens in this region of the spectrum.

AZDye™ 647 Azide can be reacted with terminal alkynes via a copper-catalyzed click reaction (CuAAC). It also reacts with strained cyclooctyne via a copper-free “click chemistry” reaction to form a stable triazole and does not require Cu-catalyst or elevated temperatures. The brightness and photostability of this dye are best suited to direct imaging of low-abundance targets.

AZDye™ 647 is structurally similar to Alexa Fluor® 647, and spectrally is almost identical to Cy5 Dye, Alexa Fluor® 647, CF® 647 Dye, or any other Cyanine5 based fluorescent dyes. AZDye™ 647 Azide can be used as a less expensive alternative to Alexa Fluor® 647 Azide.

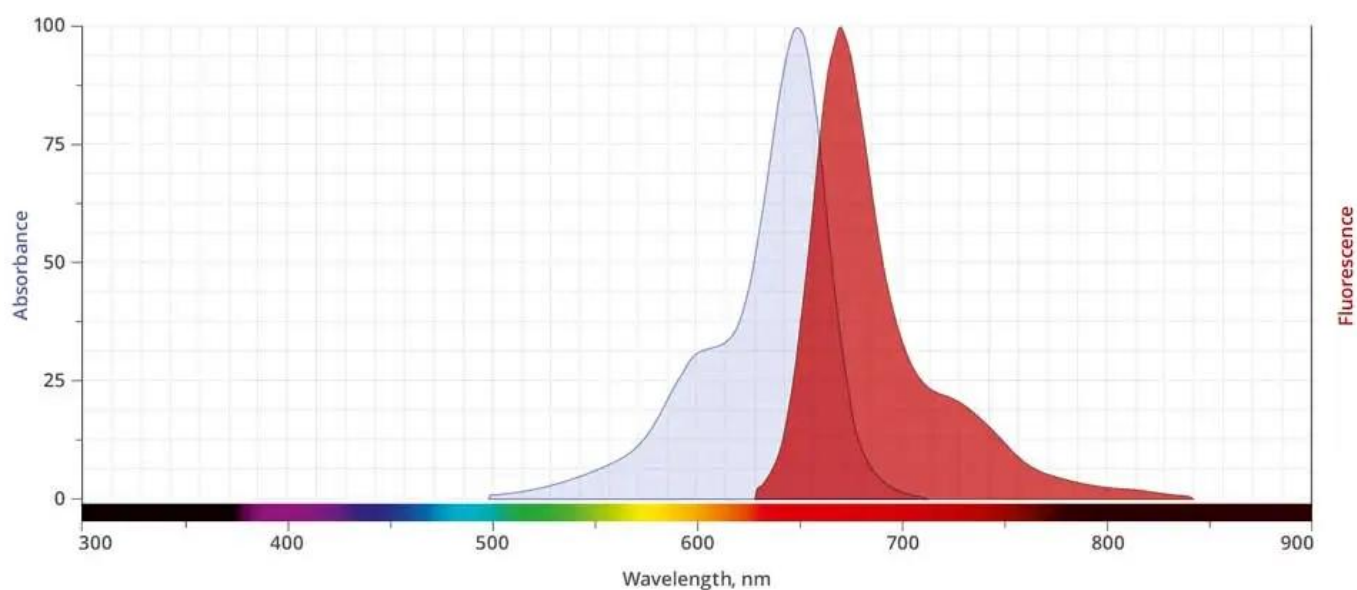
For research use only. Not intended for therapeutic or diagnostic use in animals or humans.



SPECIFICATIONS

CAS Number	N/A
Molecular Weight	941.11 (protonated)
Appearance	Blue solid
Extinction Coefficient	270,000
Unit Size	1 mg, 5 mg, 25 mg
Solubility	Water, DMSO, DMF
Storage Instructions	-20°C. Desiccate
Spectrally Similar Dyes	Alexa Fluor® 647, CF® 647, DyLight® 649
Excitation/Emission Maximum	648/671 nm
Shipping Conditions	Ambient temperature
Shipping Instructions	Ambient temperature

ABS/EM SPECTRA



For research use only. Not intended for therapeutic or diagnostic use in animals or humans.

