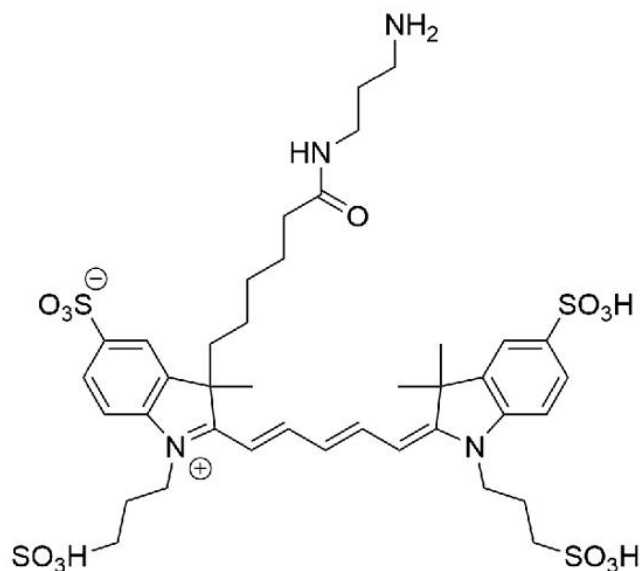


AZDYE 647 AMINE

SKU: FP-1123



Description

633/647



Laser
line

Cy5



Common
filter set

650



Excitation
max

665



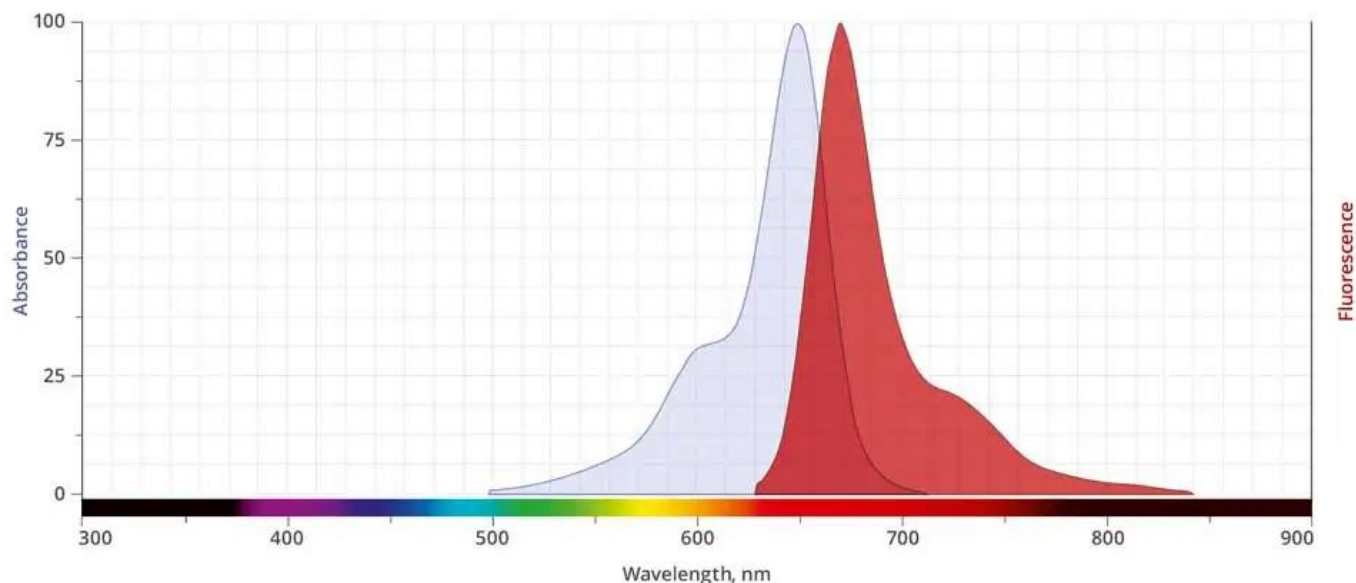
Emission
max

AZDye™ 647 is a water-soluble, bright, far-red-fluorescent dye with excitation ideally suited for the 633 nm or 647 nm laser lines. A significant advantage to using long wavelength dyes such as Cy5 or AZDye™ 647 dye over other fluorophores is the low autofluorescence of biological specimens in this region of the spectrum. AZDye 647 is a carbonyl reactive building block used to modify carboxylic groups in the presence of activators (e.g. EDC, or DCC) or activated esters (e.g. NHS esters) through a stable amide bond. It also can be employed as a polar tracer, a

For research use only. Not intended for animal or human therapeutic or diagnostic use.

reactive dye for labeling proteins via a carboxylic acid moiety, and amine donor for enzymatic transamination labeling.

AZDye™ 647 is structurally similar to Alexa Fluor® 647, and spectrally is almost identical to Cy5 Dye, Alexa Fluor® 647, CF® 647 Dye, or any other Cyanine5 based fluorescent dyes.



Abs/Em Spectra

Specifications

Unit Size	1 mg, 5 mg, 25 mg, 100 mg
Reactivity	Primary amine
Abs/Em Maxima	649/671 nm
Extinction coefficient	270,000 cm ⁻¹ M ⁻¹
Solubility	Water, DMSO, DMF
Spectrally similar dyes	Cy5, DyLight® 649,
Molecular weight	915.12 (protonated)
Storage Conditions	-20°C.
Shipping Conditions	Ambient temperature

For research use only. Not intended for animal or human therapeutic or diagnostic use.