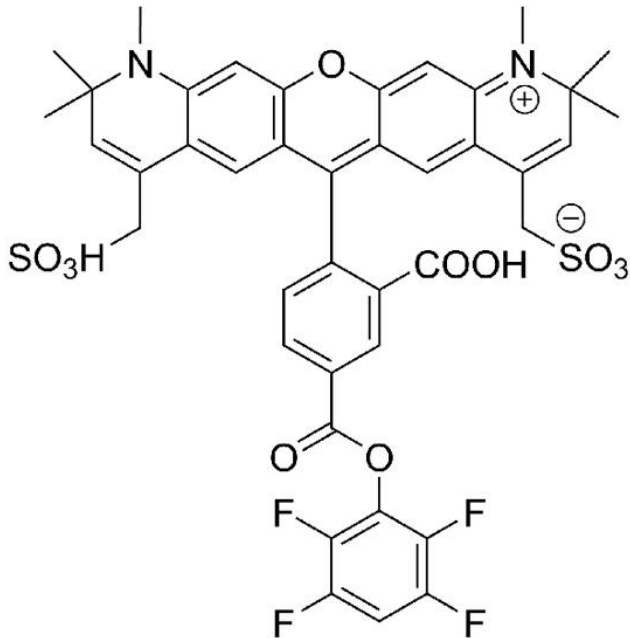




AZDYE 594 TFP ESTER

SKU: FP-1111



DESCRIPTION

568



Laser
line

Texas Red



Common
filter set

578



Excitation
max

603



Emission
max

For research use only. Not intended for therapeutic or diagnostic use in animals or humans.



AZDye™ 594 TFP Ester is bright, water-soluble, and pH-insensitive from pH 4 to pH 10 red-fluorescent dye often used for modifying proteins or antibodies through the primary amines (Lys), amine-modified oligonucleotides, and other amine-containing biomolecules with AZDye™ 594 label. The labeling occurs most efficiently at pH 7-9 and forms a stable, covalent amide bond. AZDye™ 594 dye can be used for proteins labeling at high molar ratios without significant self-quenching, enabling brighter conjugates and more sensitive detection.

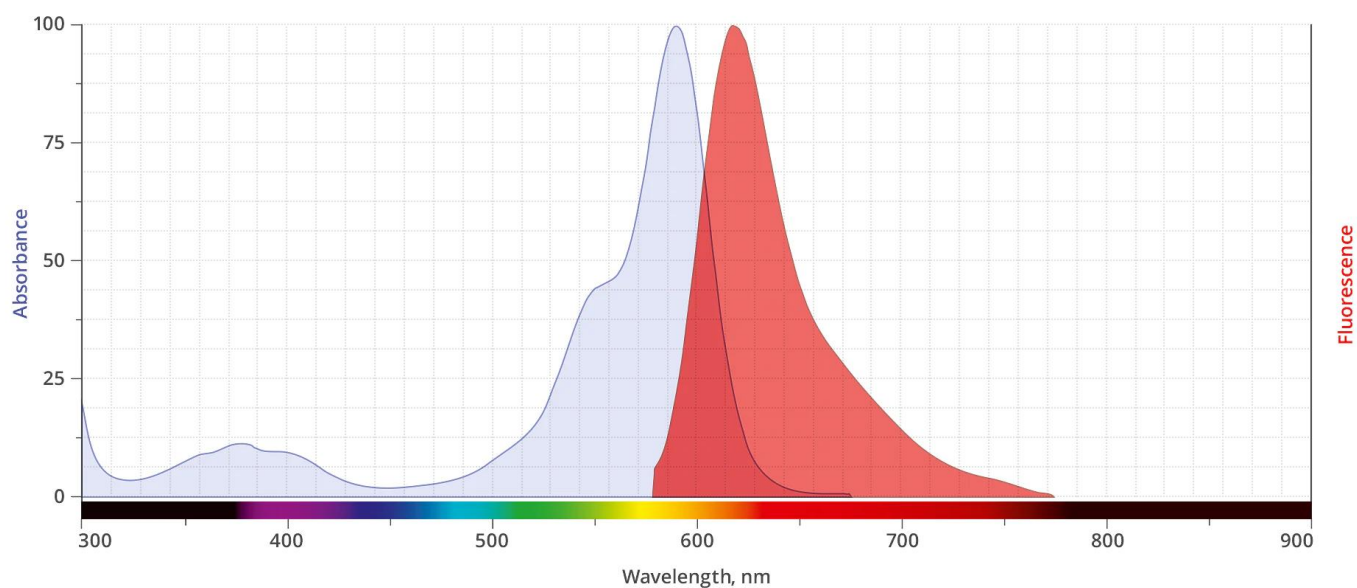
TFP (tetrafluorophenyl) ester is an amine-reactive activated ester that reacts with primary amines of biomolecules in the same way as the succinimidyl ester (SE or NHS-ester) to form a stable amide bond. The major advantage of TFP esters over the succinimidyl ester is much improved resistance to spontaneous hydrolysis during conjugation reactions resulting in more efficiency and better reproducible labeling of biopolymers. TFP esters are stable for several hours at the basic pH typically used for reactions—far outlasting succinimidyl esters.

SPECIFICATIONS

Molecular Weight	870.84
Extinction Coefficient	92,000 cm ⁻¹ M ⁻¹
Reactivity	Primary amine
Unit Size	1 mg, 5 mg, 25 mg, 100 mg
Solubility	Water, DMSO, DMF
Storage Instructions	-20°C.
Spectrally Similar Dyes	Alexa Fluor® 594, CF™ 594, DyLight® 594
Excitation/Emission Maximum	590/617 nm
Shipping Conditions	Ambient temperature
Shipping Instructions	Ambient temperature

ABS/EM SPECTRA

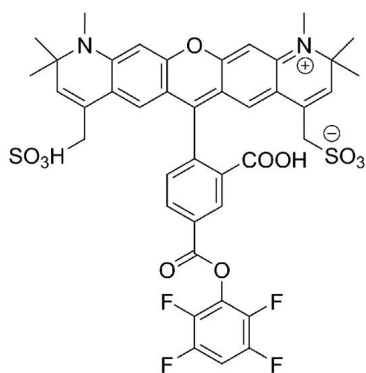
For research use only. Not intended for therapeutic or diagnostic use in animals or humans.



DOCUMENTS

- [Safety Data Sheet](#)
- [Datasheet](#)

GALLERY IMAGES



For research use only. Not intended for therapeutic or diagnostic use in animals or humans.