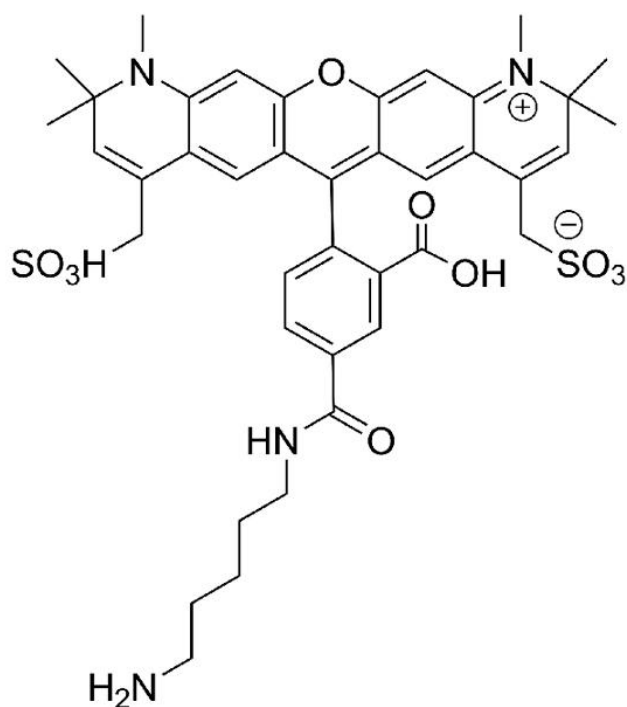






AZDYE 594 CADAVERINE

SKU: FP-1103



Description

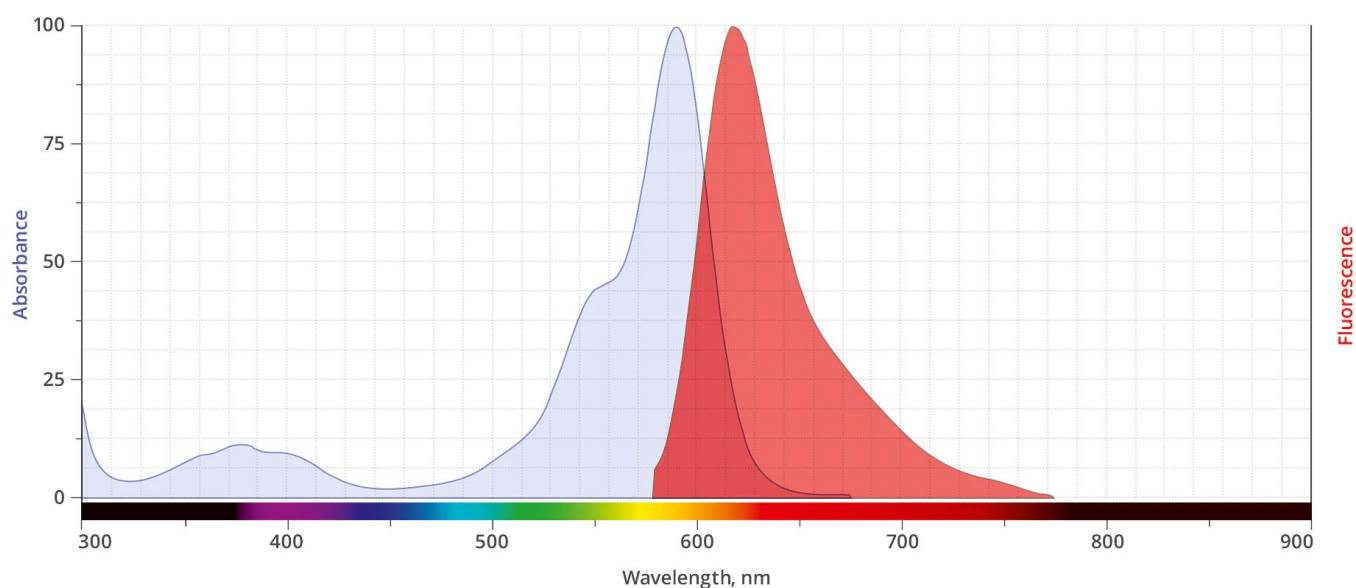
568  Laser line	Texas Red  Common filter set
578  Excitation max	603  Emission max

AZDye™ 594 Cadaverine is a carbonyl reactive building block used to modify carboxylic groups in the presence of activators (e.g. EDC, or DCC) or activated esters (e.g. NHS esters) through a

For research use only. Not intended for animal or human therapeutic or diagnostic use.

stable amide bond. It also can be employed as a polar tracer and as a reactive dye for labeling proteins via a carboxylic acid moiety.

AZDye™ 594 is bright, water-soluble, and pH-insensitive from pH 4 to pH 10 red-fluorescent dye with absorption and emission maxima at 590 and 617 nm, respectively. It can be used with the 561 nm and 594 nm laser lines. AZDye™ 594 dye conjugated to a variety of antibodies, peptides, prot



Abs/Em Spectra

Specifications

Unit Size	1 mg, 5 mg, 25 mg, 100 mg
Reactivity	Primary amine
Abs/Em Maxima	590/617 nm
Extinction coefficient	92,000 cm ⁻¹ M ⁻¹
Solubility	Water, DMSO, DMF
Spectrally similar dyes	Alexa Fluor® 594, CF™ 594, DyLight® 594
Molecular weight	806.95
Storage Conditions	-20°C.
Shipping Conditions	Ambient temperature

For research use only. Not intended for animal or human therapeutic or diagnostic use.

For research use only. Not intended for animal or human therapeutic or diagnostic use.