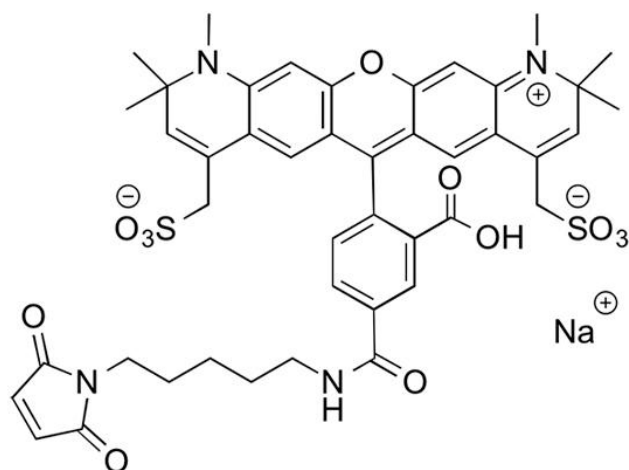
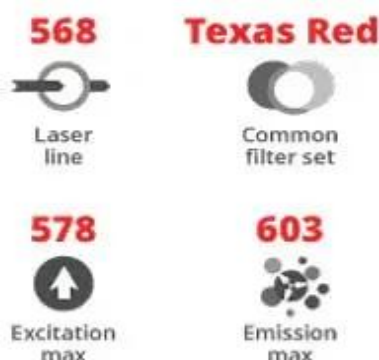


AZDYE 594 C5 MALEIMIDE

SKU: FP-1102



Description

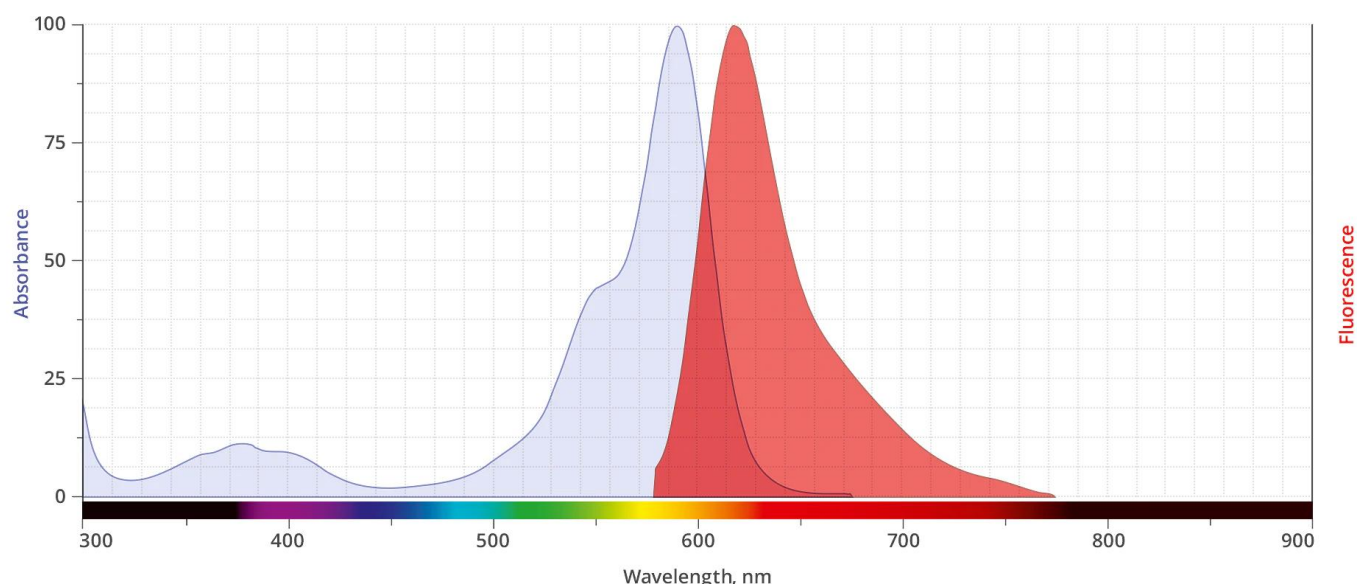


AZDye 594 C5 Maleimide is bright, water-soluble, and pH-insensitive from pH 4 to pH 10 red-fluorescent dye with absorption and emission maxima at 590 and 617 nm, respectively. It can be used with the 561 nm and 594 nm laser lines. AZDye 594 dye conjugated to a variety of antibodies, peptides, proteins, tracers, and amplification substrates often used for generation of stable signal in imaging and flow cytometry. The brightness and photostability of this dye are best suited to direct imaging of low-abundance targets.

Maleimide is the most popular sulfhydryl-reactive reactive group for conjugating the dye to a

For research use only. Not intended for animal or human therapeutic or diagnostic use.

thiol group on a protein, oligonucleotide thiophosphate, or low molecular weight ligand. The maleimide group specifically and efficiently reacts with reduced thiols (sulfhydryl groups, -SH) at pH 6.5 to 7.5 to form stable thioether bond. The resulting conjugates exhibit brighter fluorescence and greater photostability than the conjugates of many other spectrally similar fluorophores.



Abs/Em Spectra

Specifications

Unit Size	1 mg, 5 mg, 25 mg, 100 mg
Reactivity	Thiol (Cys)
Abs/Em Maxima	590/617 nm
Extinction coefficient	96,000 cm ⁻¹ M ⁻¹
Solubility	Water, DMSO, DMF
Spectrally similar dyes	Alexa Fluor® 594, CF® 594, Texas Red
Molecular weight	885.98
Storage Conditions	-20°C.
Shipping Conditions	Ambient temperature

For research use only. Not intended for animal or human therapeutic or diagnostic use.