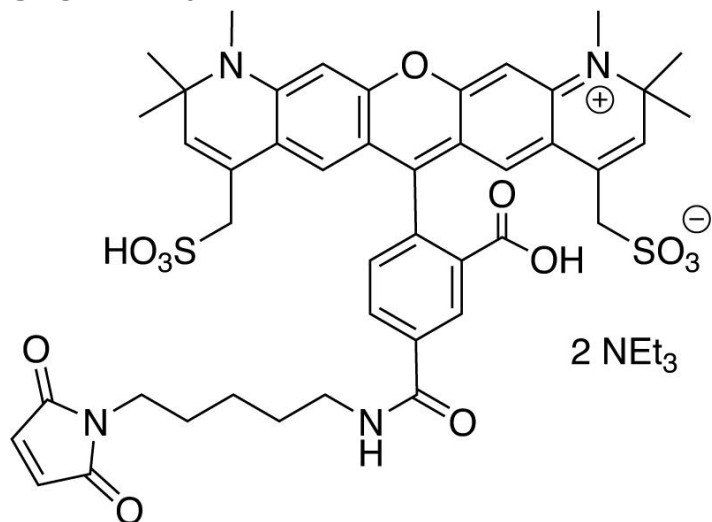




## AZDYE 594 MALEIMIDE

SKU: FP-1102



### DESCRIPTION

568



Laser  
line

Texas Red



Common  
filter set

578



Excitation  
max

603



Emission  
max

AZDye 594 C5 Maleimide is bright, water-soluble, and pH-insensitive from pH 4 to pH 10 red-fluorescent dye with absorption and emission maxima at 590 and 617 nm, respectively. It can be used with the 561 nm and 594 nm laser lines. AZDye 594 dye conjugated to a variety of antibodies, peptides, proteins, tracers, and amplification substrates often used for generation of stable signal in imaging and flow cytometry. The brightness and photostability of this dye are

**For research use only. Not intended for therapeutic or diagnostic use in animals or humans.**



best suited to direct imaging of low-abundance targets.

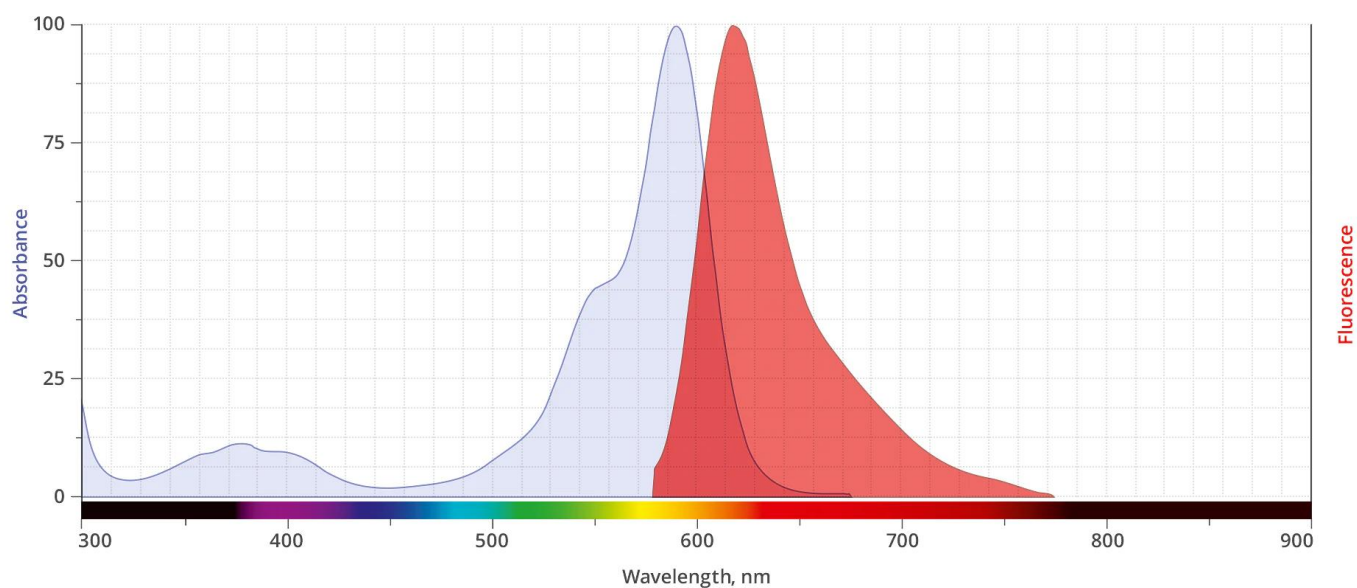
Maleimide is the most popular sulfhydryl-reactive reactive group for conjugating the dye to a thiol group on a protein, oligonucleotide thiophosphate, or low molecular weight ligand. The maleimide group specifically and efficiently reacts with reduced thiols (sulfhydryl groups, -SH) at pH 6.5 to 7.5 to form stable thioether bond. The resulting conjugates exhibit brighter fluorescence and greater photostability than the conjugates of many other spectrally similar fluorophores.

## SPECIFICATIONS

<b>Extinction Coefficient</b>	96,000 cm <sup>-1</sup> M <sup>-1</sup>
<b>Reactivity</b>	Thiol (Cys)
<b>Unit Size</b>	1 mg, 5 mg, 25 mg, 100 mg
<b>Solubility</b>	Water, DMSO, DMF
<b>Storage Instructions</b>	-20°C.
<b>Spectrally Similar Dyes</b>	Alexa Fluor® 594, CF® 594, Texas Red
<b>Shipping Conditions</b>	Ambient temperature
<b>Shipping Instructions</b>	Ambient temperature

## ABS/EM SPECTRA

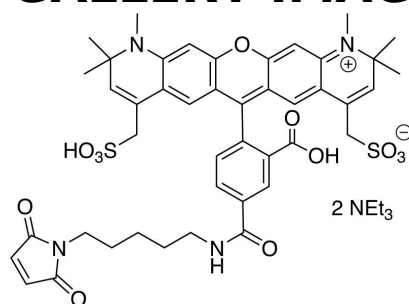
**For research use only. Not intended for therapeutic or diagnostic use in animals or humans.**



## DOCUMENTS

- [Safety Data Sheet](#)
- [Download CoA](#)
- [Datasheet](#)

## GALLERY IMAGES



**For research use only. Not intended for therapeutic or diagnostic use in animals or humans.**