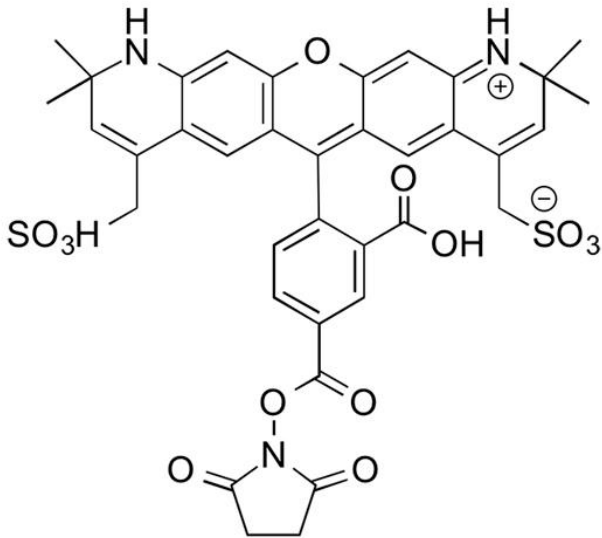








AZDYE 568 NHS ESTER

SKU: FP-1081



DESCRIPTION

568  Laser line	Texas Red  Common filter set
578  Excitation max	603  Emission max

AZDye™ 568 NHS Ester (Alexa Fluor 568 NHS Ester equivalent) is an amine-reactive, orange fluorescent dye routinely used to label proteins or antibodies through the primary amines (Lys),

For research use only. Not intended for therapeutic or diagnostic use in animals or humans.



amine-modified oligonucleotides, and other amine-containing biomolecules. AZDye™ 568 dye can be used for proteins labeling at high molar ratios without significant self-quenching, enabling brighter conjugates and more sensitive detection.

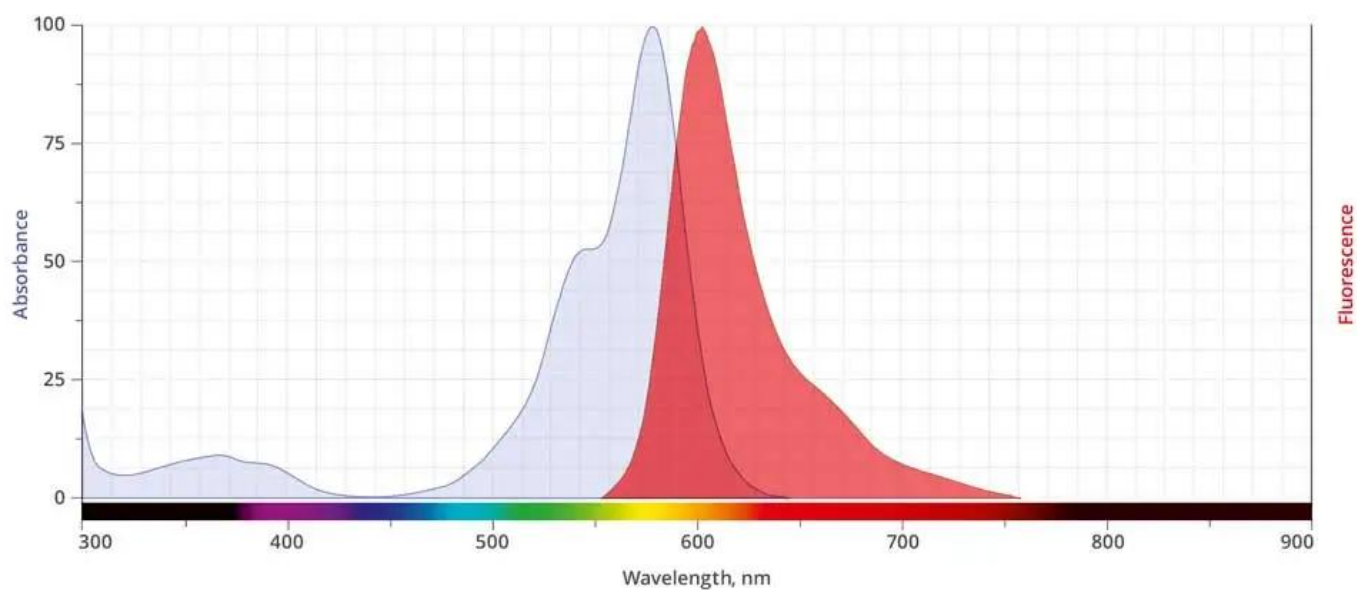
AZDye™ 568 is a water-soluble, photostable, and bright orange dye with pH insensitive emission from pH 4 to pH 10. The excitation of AZDye™ 568 dye ideally suited for the 568 nm laser line on the Ar-Kr mixed-gas laser. AF™ 568 dye conjugated to a variety of antibodies, peptides, proteins, tracers, and amplification substrates often used for generation of stable signal in imaging and flow cytometry.

SPECIFICATIONS

Molecular Weight	791.80 (protonated)
Extinction Coefficient	88,000 cm ⁻¹ M ⁻¹
Reactivity	Primary amine
Unit Size	1 mg, 5 mg, 25 mg, 100 mg
Solubility	Water, DMSO, DMF
Storage Instructions	-20°C.
Spectrally Similar Dyes	Alexa Fluor® 568, CF™ 568
Excitation/Emission Maximum	578/602 nm
Shipping Conditions	Ambient temperature
Shipping Instructions	Ambient temperature

ABS/EM SPECTRA

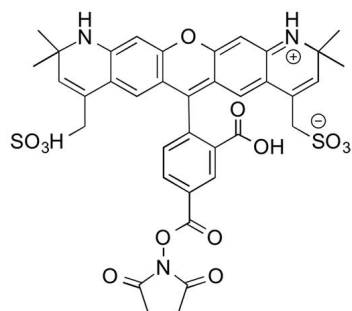
For research use only. Not intended for therapeutic or diagnostic use in animals or humans.



DOCUMENTS

- [Safety Data Sheet](#)
- [Datasheet](#)

GALLERY IMAGES



For research use only. Not intended for therapeutic or diagnostic use in animals or humans.