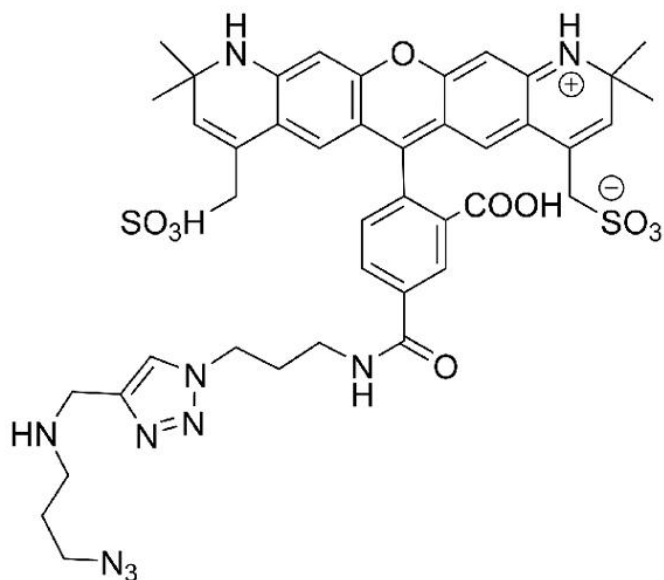


AZDYE 568 AZIDE PLUS

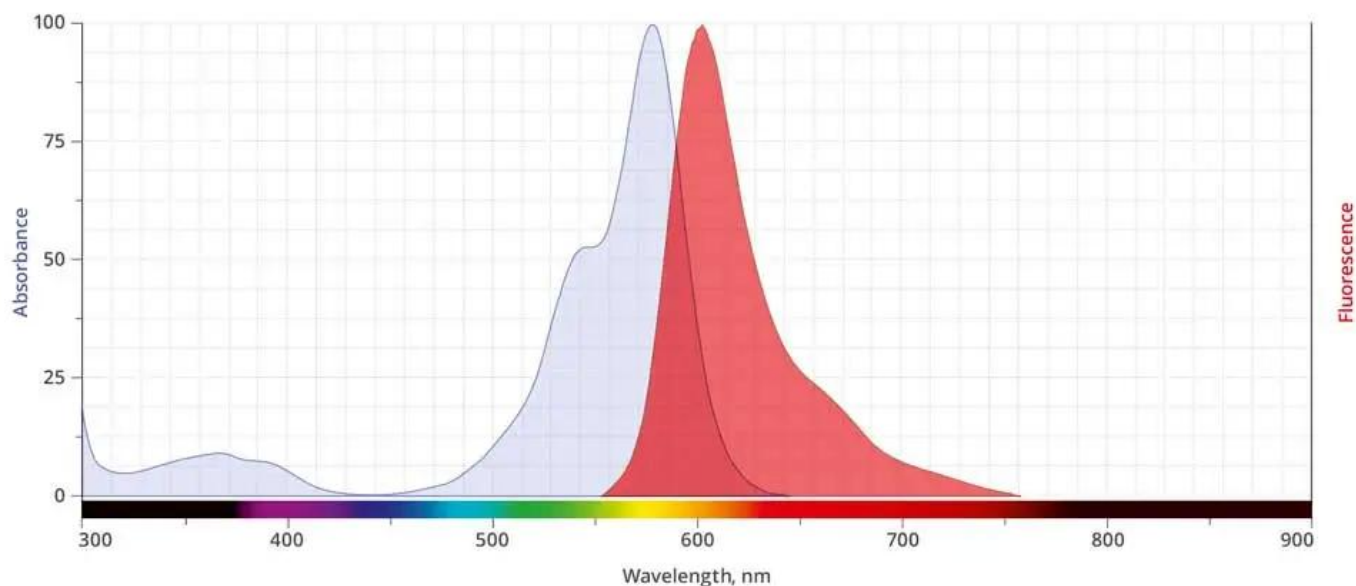
SKU: CCT-1480



Description

Azide Plus reagent is the most recent step in improving CuAAC reaction in complex media developed by scientists at Click Chemistry Tools. Azide Plus reagents contain a complete copper-chelating system in their structure, allowing for the formation of strong, active copper complexes that act simultaneously as both reactant and catalyst in the CuAAC reaction. This azide-copper complex reacts almost instantaneously with alkynes under diluted conditions. This unprecedented reactivity in the CuAAC reaction is of special value for the detection of low abundance targets, improving biocompatibility, and is also valuable for any other application where greatly improved S/N ratio is highly desired.

For research use only. Not intended for animal or human therapeutic or diagnostic use.



Abs/Em Spectra

Specifications

Unit Size	1 mg, 5 mg, 25 mg
Abs/Em Maxima	578/602 nm
Extinction Coefficient	88,000
Flow Cytometry Laser Line	532 nm or 568 nm
Microscopy Laser Line	532 nm or 568 nm
Spectrally Similar Dyes	Alexa Fluor® 568, CF® 568
Molecular weight	915.01 (protonated)
CAS	N/A
Solubility	Water, DMSO, DMF
Purity	>95% (HPLC)
Appearance	Red solid
Storage Conditions	-20°C. Desiccate

For research use only. Not intended for animal or human therapeutic or diagnostic use.