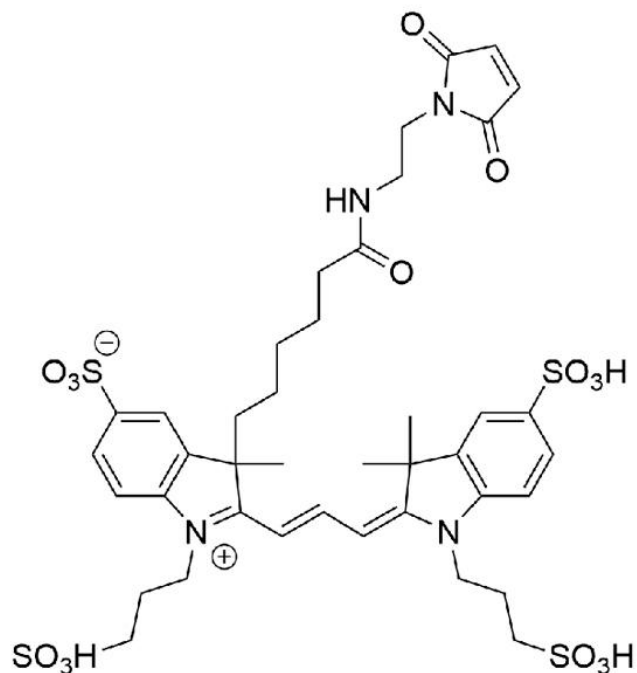


AZDYE 555 MALEIMIDE

SKU: FP-1168



Description

488/532



Laser
line

TRITC



Common
filter set

555



Excitation
max

580



Emission
max

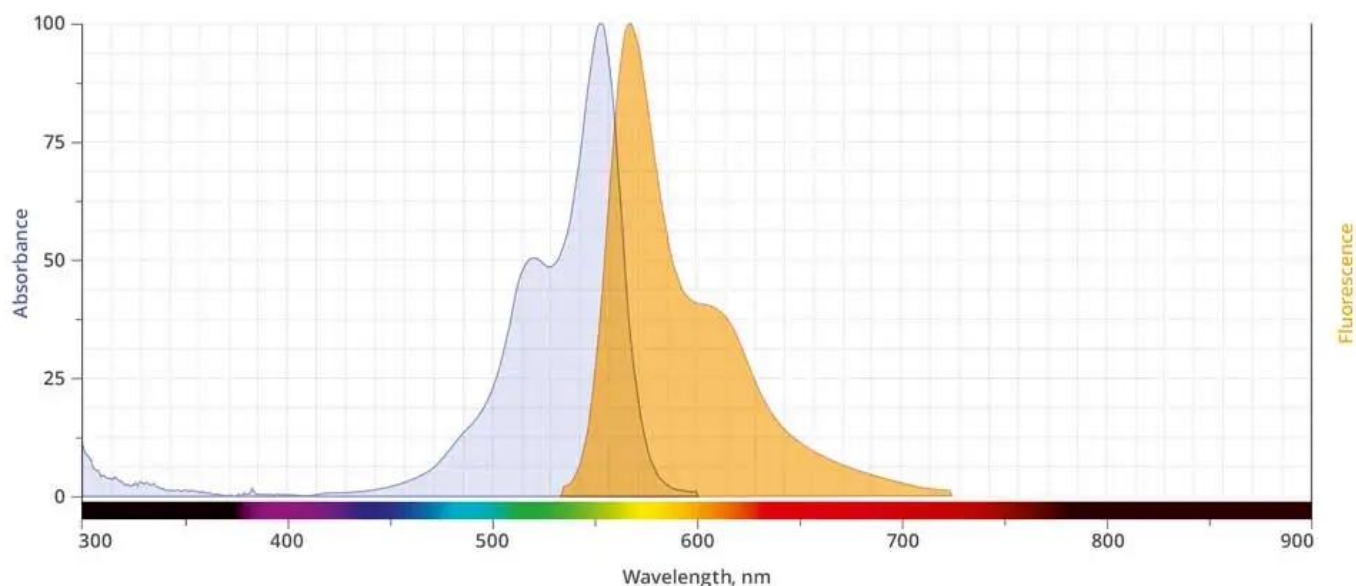
AZDye™ 555 Maleimide is a water-soluble, bright orange-fluorescent dye with excitation ideally suited for the 532 nm or 555 nm laser lines and visualized with TRITC (tetramethylrhodamine) filter sets. AZDye™ 555 conjugates of antibodies, peptides, and proteins are pH insensitive from

For research use only. Not intended for animal or human therapeutic or diagnostic use.

pH 4 to pH 10. Proteins can be labeled with AZDye™ 555 dye at high molar ratios without significant self-quenching, leading to brighter conjugates and more sensitive detection. AZDye 555 conjugates ideally suited for detection of low abundance targets.

Maleimide is the most popular sulfhydryl-reactive reactive group for conjugating the dye to a thiol group on a protein, oligonucleotide thiophosphate, or low molecular weight ligand. The maleimide group specifically and efficiently reacts with reduced thiols (sulfhydryl groups, -SH) at pH 6.5 to 7.5 to form stable thioether bond. The resulting conjugates exhibit brighter fluorescence and greater photostability than the conjugates of many other spectrally similar fluorophores.

Abs/Em Spectra



Specifications

Unit Size	1 mg, 5 mg, 25 mg, 100 mg
Reactivity	Thiol (Cys)
Abs/Em Maxima	555/572 nm
Extinction coefficient	158,000 cm ⁻¹ M ⁻¹
Solubility	Water, DMSO, DMF
Spectrally similar dyes	Cy5, DyLight® 649,
Molecular weight	955.09 (protonated)
Storage Conditions	-20°C.

For research use only. Not intended for animal or human therapeutic or diagnostic use.

Shipping Conditions

Ambient temperature

For research use only. Not intended for animal or human therapeutic or diagnostic use.