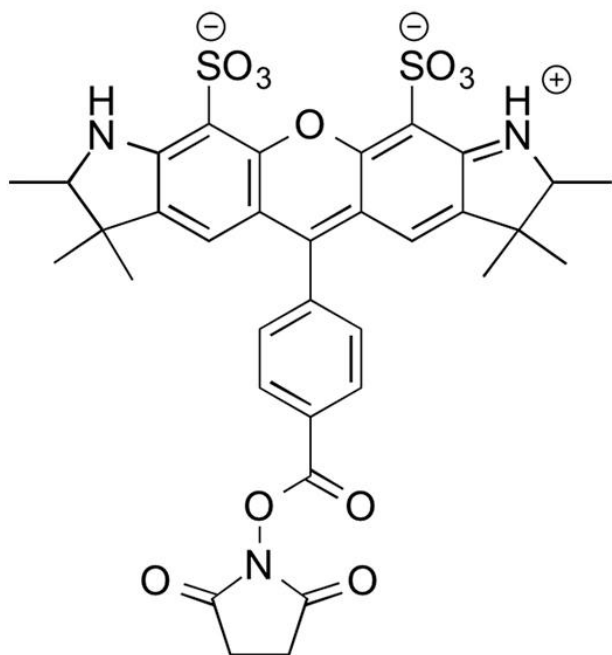


AZDYE 532 NHS ESTER

SKU: FP-1041



Description



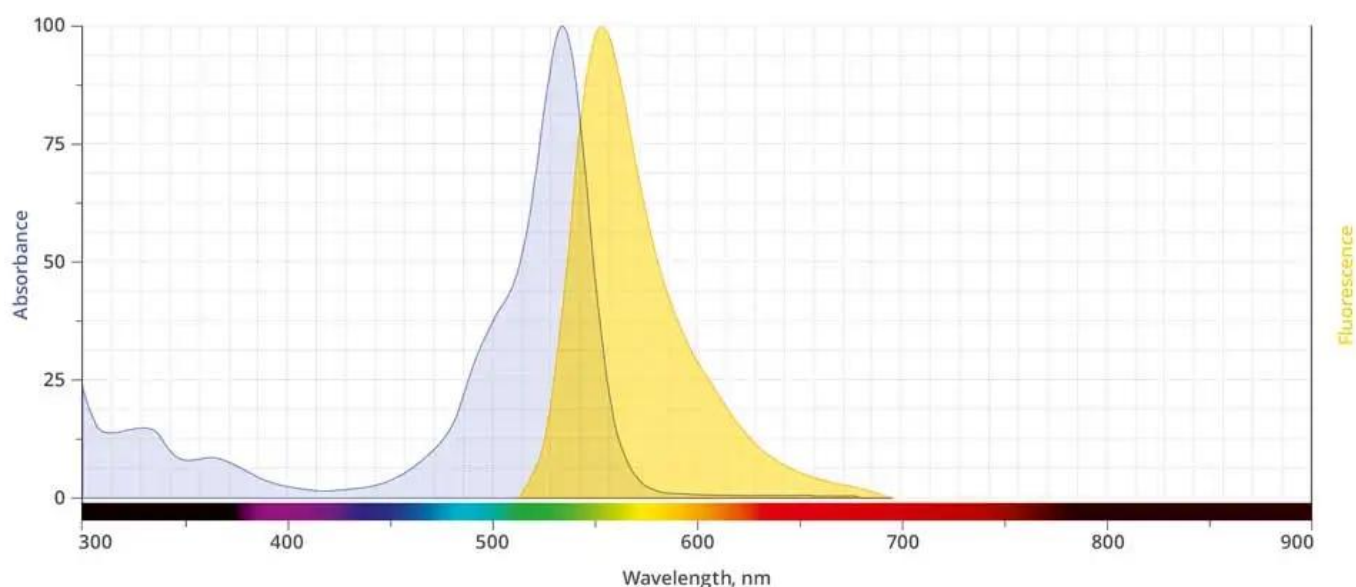
AZDye™ 532 NHS Ester is an amine reactive, yellow-emitting dye routinely used to label proteins or antibodies through primary amines (Lys), amine-modified oligonucleotides, and other amine-containing biomolecules. The labeling occurs most efficiently at pH 7-9 and forms a

For research use only. Not intended for animal or human therapeutic or diagnostic use.

stable, covalent amide bond.

AZDye™ 532 is a bright yellow-fluorescent dye with pH insensitive emission from pH 4 to pH 10. The excitation of AZDye™ 532 is ideally suited for the frequency-doubled Nd:YAG laser line. AZDye™ 532 can be conjugated to a variety of antibodies, peptides, proteins, tracers, and amplification substrates, and is often used for the generation of stable signals in imaging and flow cytometry.

Abs/Em Spectra



Specifications

Unit Size	1 mg, 5 mg, 25 mg, 100 mg
Reactivity	Primary amines
Abs/Em Maxima	530/555 nm
Extinction coefficient	81,000 cm ⁻¹ M ⁻¹
Solubility	Water, DMSO, DMF
Spectrally similar dyes	Alexa Fluor® 532, DyLight® 532
Molecular weight	723.80

For research use only. Not intended for animal or human therapeutic or diagnostic use.

Storage Conditions

-20°C.

Shipping Conditions

Ambient temperature

For research use only. Not intended for animal or human therapeutic or diagnostic use.