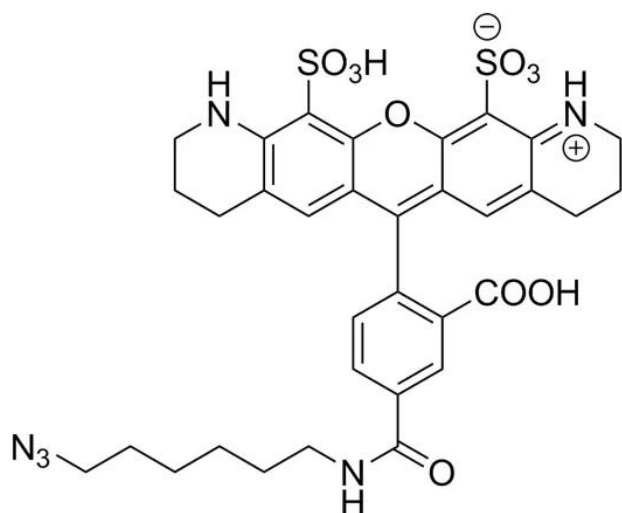




## **AZDYE 532 AZIDE**

**SKU:** CCT-1279



---

## **DESCRIPTION**

AZDye™ 532 Azide is a bright, yellow-fluorescent dye that reacts with terminal alkynes via a copper-catalyzed click reaction (CuAAC) to form a stable triazole linker. It also reacts with strained cyclooctyne via a copper-free click chemistry reaction to form a stable triazole and does not require Cu-catalyst or elevated temperatures.

AZDye™ 532 Azide is ideally suited for the frequency-doubled Nd:YAG laser line. This probe is water-soluble and its fluorescence is pH independent over a wide pH range. The brightness and photostability of AF 532 dyes are well suited to direct imaging of low-abundance targets.

AZDye™ 532 is structurally similar to Alexa Fluor® 532. Its absorption/emission spectra is a perfect match to spectra of many other fluorescent dyes based on sulfonated rhodamine core, including Alexa Fluor® 532 and CF®532 Dye.

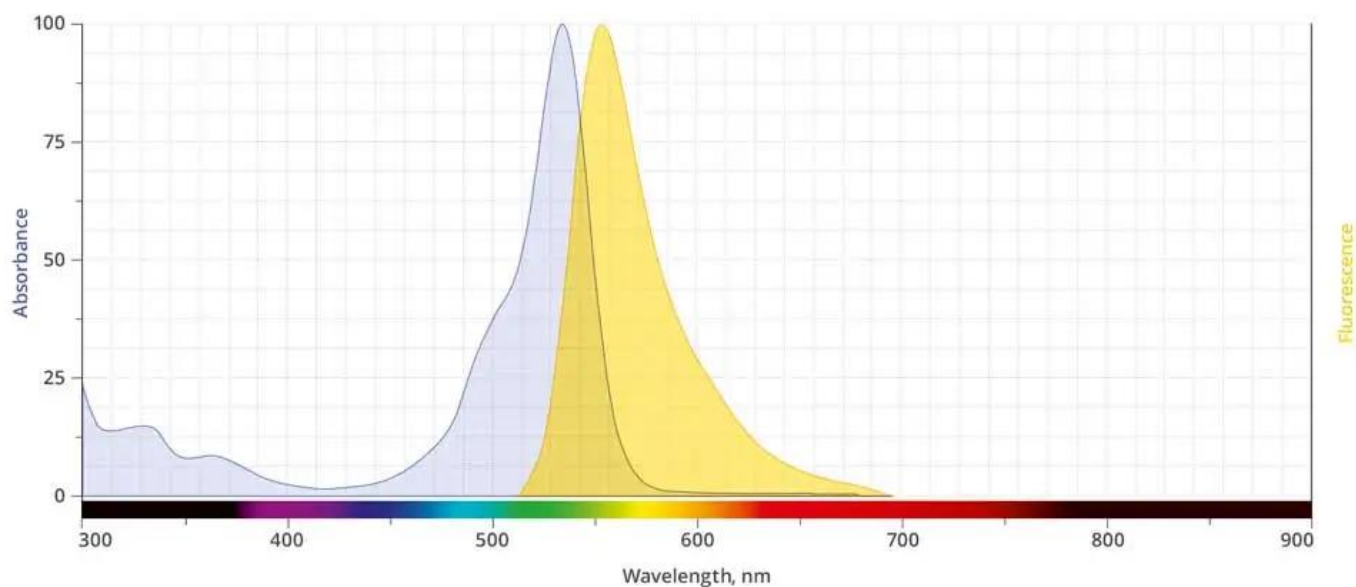
**For research use only. Not intended for therapeutic or diagnostic use in animals or humans.**



## SPECIFICATIONS

<b>CAS Number</b>	N/A
<b>Molecular Weight</b>	738.79
<b>Appearance</b>	Orange to light red solid
<b>Extinction Coefficient</b>	78,000
<b>Purity</b>	>95% (HPLC)
<b>Unit Size</b>	1 mg, 5 mg, 25 mg
<b>Solubility</b>	Water, DMSO, DMF
<b>Storage Instructions</b>	-20°C. Desiccate
<b>Spectrally Similar Dyes</b>	Alexa Fluor® 532, Atto™ 532, CF® 532 dyes
<b>Laser Line</b>	532 nm
<b>Excitation/Emission Maximum</b>	532/554 nm
<b>Shipping Conditions</b>	Ambient temperature
<b>Shipping Instructions</b>	Ambient temperature

## ABS/EM SPECTRA



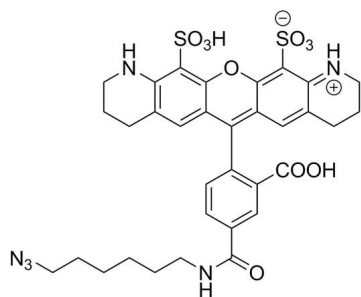
For research use only. Not intended for therapeutic or diagnostic use in animals or humans.



## DOCUMENTS

- [Safety Data Sheet](#)
- [Download CoA](#)
- [Datasheet](#)

## GALLERY IMAGES



**For research use only. Not intended for therapeutic or diagnostic use in animals or humans.**