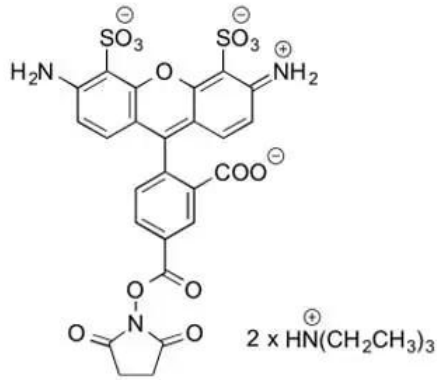


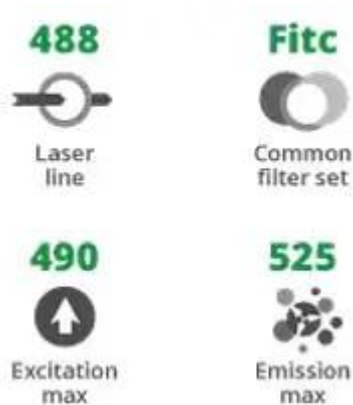


AZDYE 488 NHS ESTER

SKU: FP-1013



DESCRIPTION



AZDye™ 488 NHS Ester is an amine reactive, green-emitting dye routinely used to label proteins or antibodies through primary amines (Lys), amine-modified oligonucleotides, and other amine-containing biomolecules. The labeling occurs most efficiently at pH 7-9 and forms a stable, covalent amide bond.

AZDye™ 488 is a water-soluble, highly photostable dye with a very high fluorescence quantum

For research use only. Not intended for therapeutic or diagnostic use in animals or humans.



yield. AZDye 488 has green fluorescence that is pH independent from pH 4 to pH 10 with excitation ideally suited for the 488 nm laser line. AZDye™ 488 dye can be conjugated to a variety of antibodies, peptides, proteins, tracers, and amplification substrates which are often used for generation of stable signals in imaging and flow cytometry.

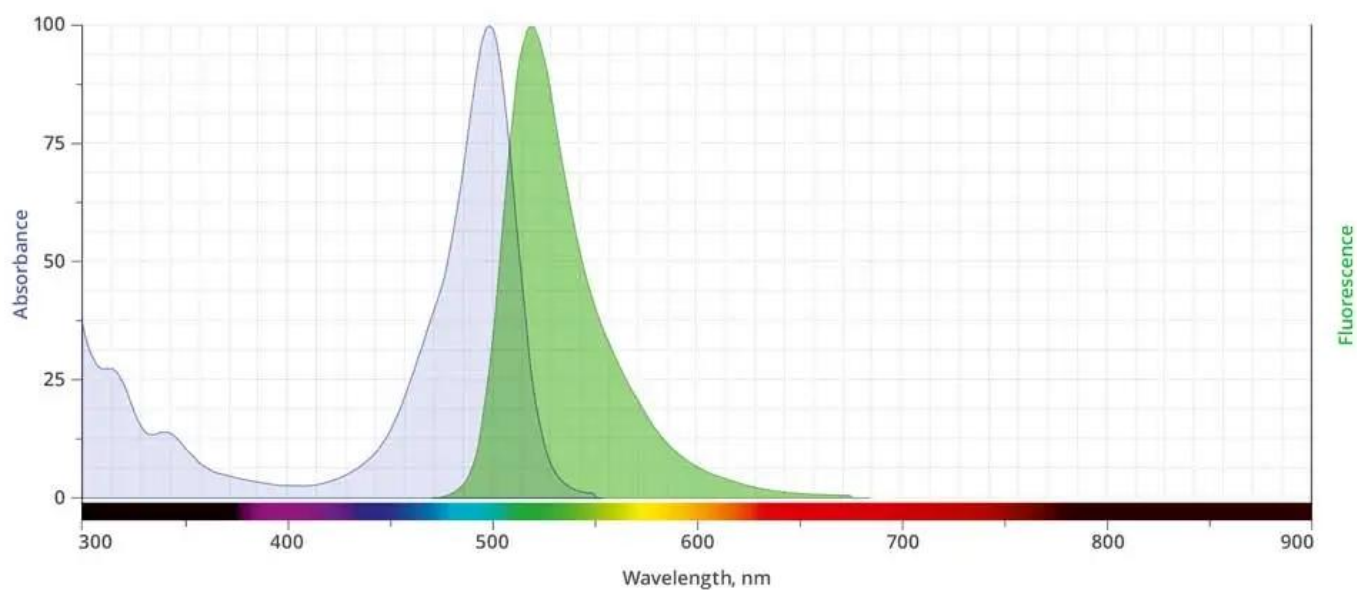
AZDye™ 488 Ester is structurally identical to Alexa Fluor® 488 NHS Ester. Its absorption/emission spectra is a perfect match to spectra of many other fluorescent dyes based on sulfonated rhodamine 110 core, including DyLight® 488, Alexa Fluor® 488, and CF® 488 Dye.

SPECIFICATIONS

Molecular Weight	631.54 (protonated)
Extinction Coefficient	73,000 cm ⁻¹ M ⁻¹
Reactivity	Primary amines
Unit Size	1 mg, 5 mg, 25 mg, 100 mg
Solubility	Water, DMSO, DMF
Storage Instructions	-20°C.
Spectrally Similar Dyes	Alexa Fluor® 488, DyLight® 488, Fluorescein, Oregon Green 488
Excitation/Emission Maximum	494/517 nm
Shipping Conditions	Ambient temperature
Shipping Instructions	Ambient temperature

ABS/EM SPECTRA

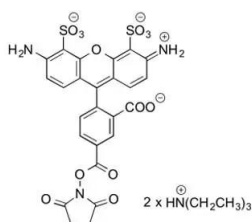
For research use only. Not intended for therapeutic or diagnostic use in animals or humans.



DOCUMENTS

- [Safety Data Sheet](#)
- [Download CoA](#)
- [Datasheet](#)

GALLERY IMAGES



For research use only. Not intended for therapeutic or diagnostic use in animals or humans.