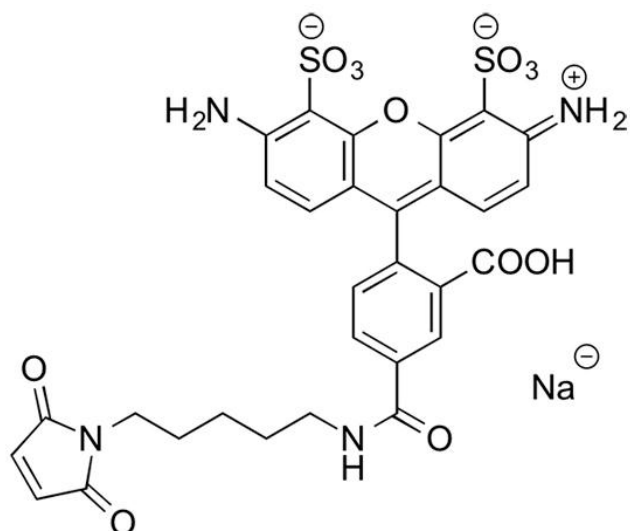


AZDYE 488 MALEIMIDE

SKU: FP-1014



488



Laser
line

Fitc



Common
filter set

490



Excitation
max

525



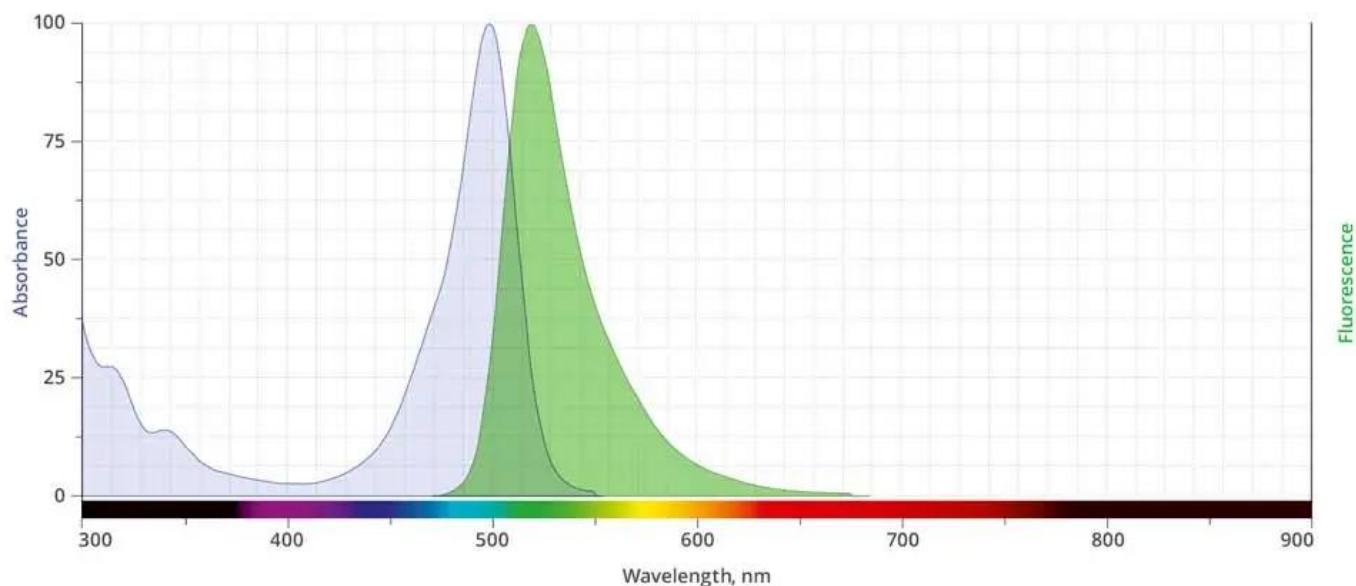
Emission
max

AZDye™ 488 is a green-fluorescent, water-soluble dye with pH insensitive emission from pH 4 to pH 10. This dye is ideally suited to the 488 nm laser line. AZDye 488 is one of the brightest dyes commercially available with fluorescence quantum yield close to 100%. AZDye™ 488 Maleimide dye is structurally identical to [Alexa Fluor® 488 C5 Maleimide](#) dye. Its absorption/emission spectra is a perfect match to spectra of many other fluorescent dyes based on sulfonated rhodamine 110 core, including CF®488 Dye, DyLight® 488 and Alexa Fluor® 488.

Maleimide is the most popular sulfhydryl-reactive reactive group for conjugating the dye to either a thiol group on a protein, oligonucleotide thiophosphate, or low molecular weight ligand.

For research use only. Not intended for animal or human therapeutic or diagnostic use.

The maleimide group specifically and efficiently reacts with reduced thiols (sulfhydryl groups, -SH) at pH 6.5 to 7.5 to form stable thioether bonds.



Abs/Em Spectra

Specifications

Unit Size	1 mg, 5 mg, 25 mg, 100 mg
Reactivity	Thiol (Cys)
Abs/Em Maxima	493/516 nm
Extinction coefficient	72,000 cm ⁻¹ M ⁻¹
Solubility	Water, DMSO, DMF
Spectrally similar dyes	Alexa Fluor® 488, DyLight® 488, Fluorescein, Oregon Green 488
Molecular weight	698.67 (protonated)
Storage Conditions	-20°C.
Shipping Conditions	Ambient temperature

For research use only. Not intended for animal or human therapeutic or diagnostic use.