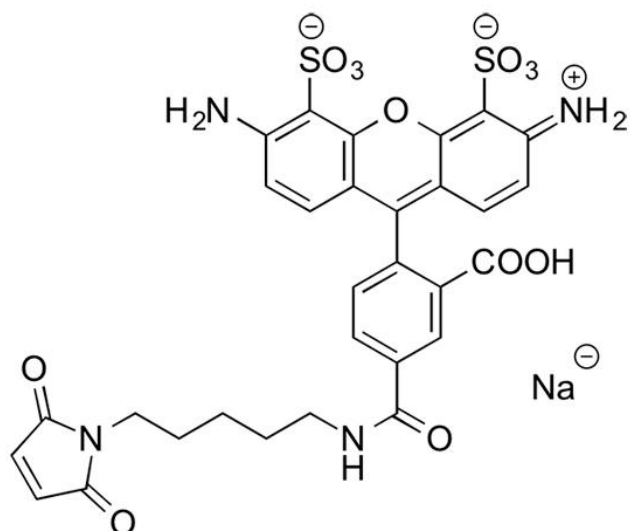




AZDYE 488 MALEIMIDE

SKU: FP-1014



DESCRIPTION



AZDye™ 488 is a green-fluorescent, water-soluble dye with pH insensitive emission from pH 4 to pH 10. This dye is ideally suited to the 488 nm laser line. AZDye 488 is one of the brightest dyes commercially available with fluorescence quantum yield close to 100%. AZDye™ 488 Maleimide

For research use only. Not intended for therapeutic or diagnostic use in animals or humans.



dye is structurally identical to Alexa Fluor® 488 C5 Maleimide dye. Its absorption/emission spectra is a perfect match to spectra of many other fluorescent dyes based on sulfonated rhodamine 110 core, including CF®488 Dye, DyLight® 488 and Alexa Fluor® 488.

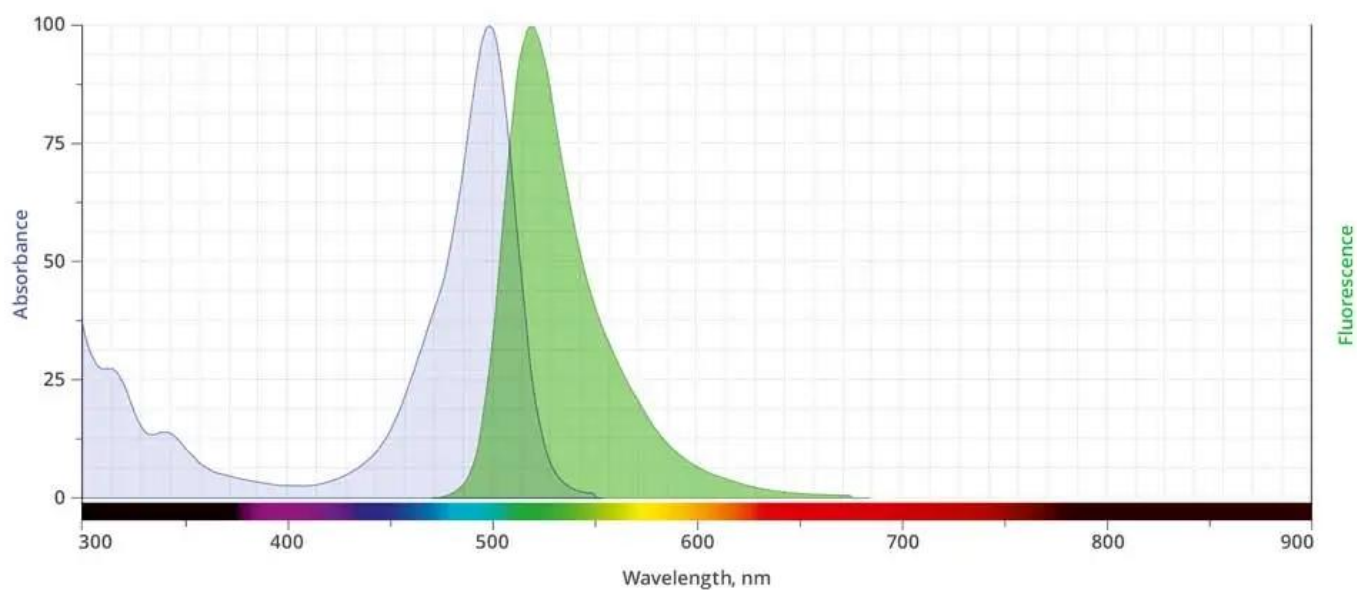
Maleimide is the most popular sulfhydryl-reactive reactive group for conjugating the dye to either a thiol group on a protein, oligonucleotide thiophosphate, or low molecular weight ligand. The maleimide group specifically and efficiently reacts with reduced thiols (sulfhydryl groups, -SH) at pH 6.5 to 7.5 to form stable thioether bonds. The resulting conjugates exhibit brighter fluorescence and greater photostability than the conjugates of many other spectrally similar fluorophores.

SPECIFICATIONS

Molecular Weight	698.67 (protonated)
Extinction Coefficient	72,000 cm ⁻¹ M ⁻¹
Reactivity	Thiol (Cys)
Unit Size	1 mg, 5 mg, 25 mg, 100 mg
Solubility	Water, DMSO, DMF
Storage Instructions	-20°C.
Spectrally Similar Dyes	Alexa Fluor® 488, DyLight® 488, Fluorescein, Oregon Green 488
Excitation/Emission Maximum	493/516 nm
Shipping Conditions	Ambient temperature
Shipping Instructions	Ambient temperature

ABS/EM SPECTRA

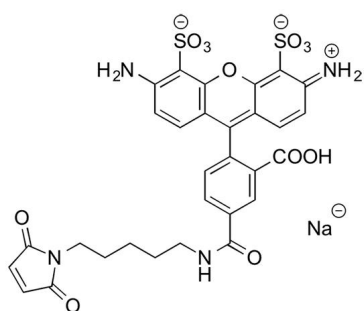
For research use only. Not intended for therapeutic or diagnostic use in animals or humans.



DOCUMENTS

- [Safety Data Sheet](#)
- [Download CoA](#)
- [Datasheet](#)

GALLERY IMAGES



For research use only. Not intended for therapeutic or diagnostic use in animals or humans.