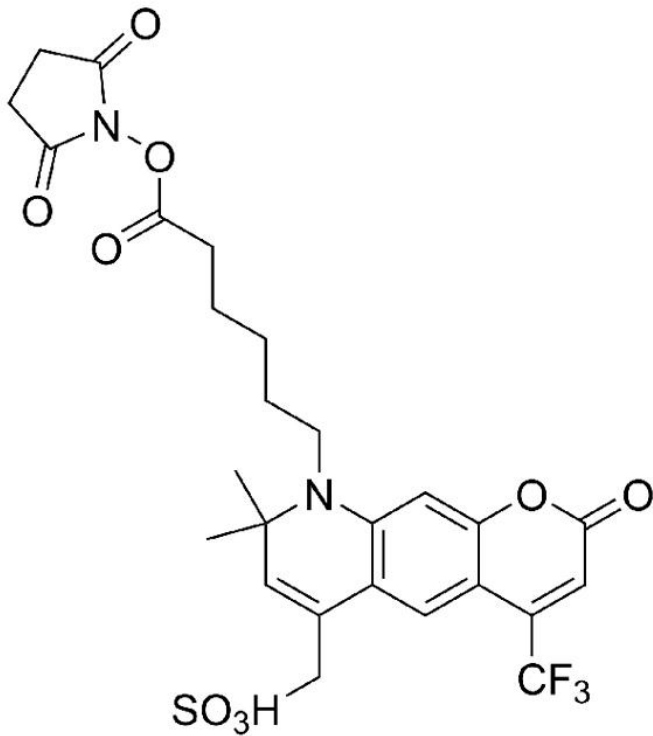


AZDYE 430 NHS ESTER

SKU: FP-1031



Description

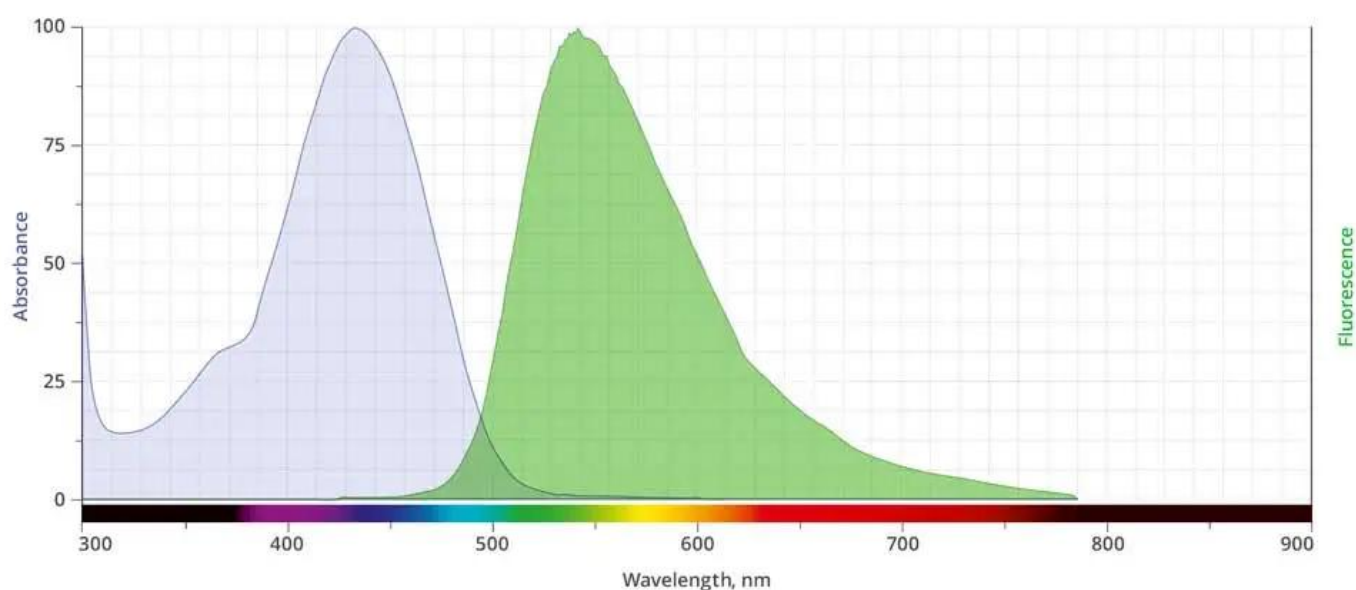


AZDye™ 430 NHS Ester is a water-soluble, green-fluorescent dye that is often used in multi-color applications, including flow cytometry and super-resolution microscopy using STORM. Its

For research use only. Not intended for animal or human therapeutic or diagnostic use.

excitation is ideally suited for the 407 nm spectral line of the krypton laser or the 408 nm violet laser diode. AZDye™ 405 conjugates are pH-insensitive from pH 4 to pH 10.

The NHS ester (or succinimidyl ester) is the most popular amine reactive group for labeling the primary amines of proteins (Lys), amine-modified oligonucleotides, and other amine-containing molecules. Proteins can be labeled with AZDye™ 430 NHS Ester at high molar ratios without significant self-quenching, leading to brighter conjugates and more sensitive detection.



Abs/Em Spectra

Specifications

Unit Size	5 mg, 25 mg, 100 mg
Reactivity	Alkynes, cyclooctynes
Abs/Em Maxima	430/539 nm
Extinction coefficient	15,000 cm ⁻¹ M ⁻¹
Solubility	Water, DMSO, DMF
Spectrally similar dyes	Alexa Fluor® 430
Molecular weight	600.56

For research use only. Not intended for animal or human therapeutic or diagnostic use.

Storage Conditions
Shipping Conditions

-20°C.
Ambient temperature

For research use only. Not intended for animal or human therapeutic or diagnostic use.