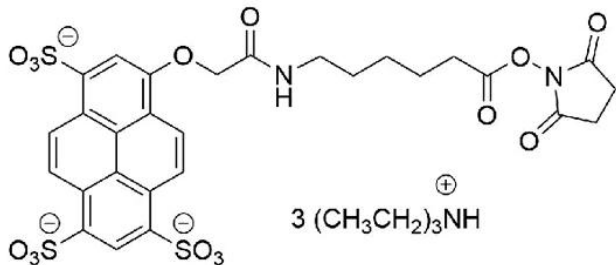




## **AZDYE 405 NHS ESTER**

**SKU:** FP-1061



## **DESCRIPTION**



AZDye™ 405 NHS Ester is a water-soluble, blue-fluorescent dye that is often used in multi-color applications, including flow cytometry and super-resolution microscopy using STORM. Its excitation is ideally suited for the 407 nm spectral line of the krypton laser or the 408 nm violet laser diode. AZDye™ 405 conjugates are pH-insensitive from pH 4 to pH 10.

The NHS ester (or succinimidyl ester) is the most popular amine reactive group for labeling with the primary amines of proteins (Lys), amine-modified oligonucleotides, and other amine-containing molecules. Proteins can be labeled with AZDye™ 405 NHS Ester at high molar ratios without significant self-quenching, leading to brighter conjugates and more sensitive detection.

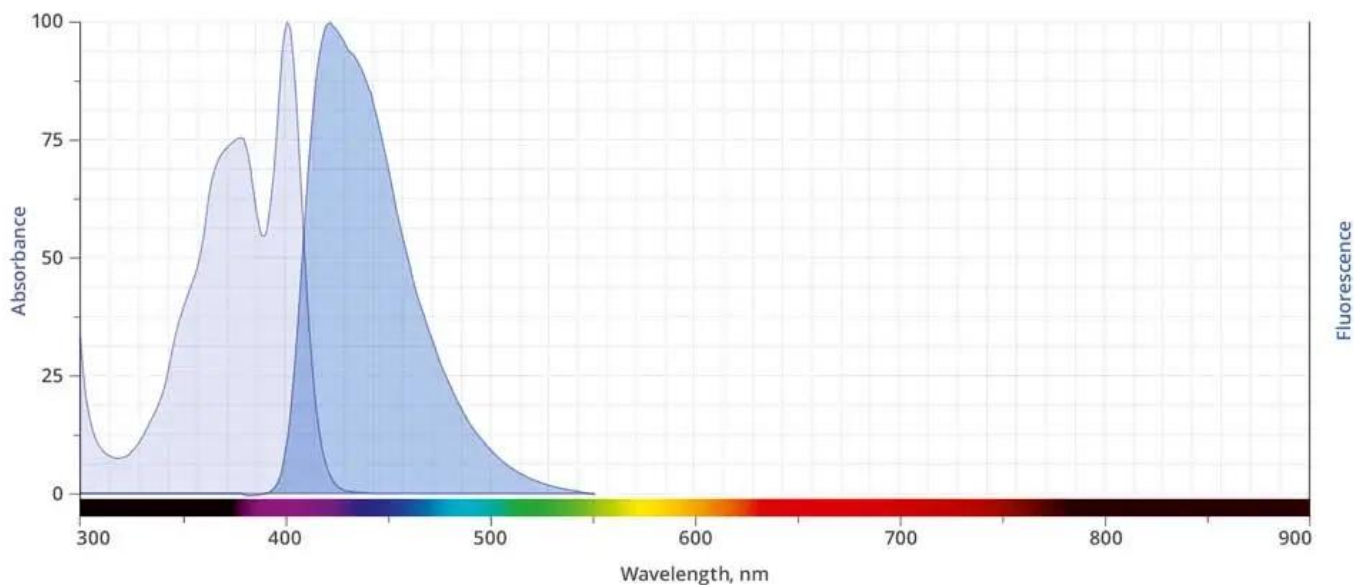
**For research use only. Not intended for therapeutic or diagnostic use in animals or humans.**



## SPECIFICATIONS

<b>Molecular Weight</b>	726.05 (protonated)
<b>Extinction Coefficient</b>	33,000 cm <sup>-1</sup> M <sup>-1</sup>
<b>Reactivity</b>	Primary amines
<b>Unit Size</b>	1 mg, 5 mg, 25 mg, 100 mg
<b>Solubility</b>	Water, DMSO, DMF
<b>Storage Instructions</b>	-20°C.
<b>Spectrally Similar Dyes</b>	Alexa Fluor® 405, DyLight® 405, Cascade Blue
<b>Excitation/Emission Maximum</b>	402/424 nm
<b>Shipping Conditions</b>	Ambient temperature
<b>Shipping Instructions</b>	Ambient temperature

## ABS/EM SPECTRA



## DOCUMENTS

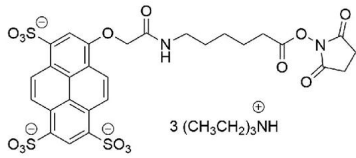
- [Safety Data Sheet](#)

For research use only. Not intended for therapeutic or diagnostic use in animals or humans.



- [Datasheet](#)

## GALLERY IMAGES



**For research use only. Not intended for therapeutic or diagnostic use in animals or humans.**