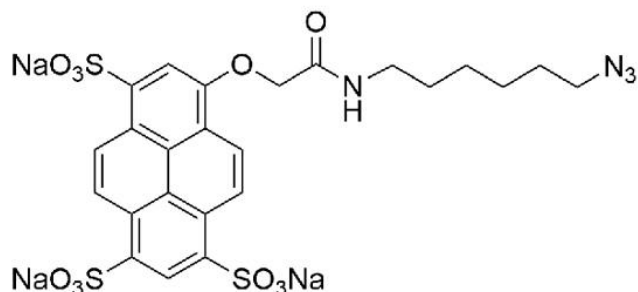




AZDYE 405 AZIDE

SKU: CCT-1307



DESCRIPTION

AZDye™ 405 Azide can be reacted with terminal alkynes via a copper-catalyzed click reaction (CuAAC). It also reacts with strained cyclooctyne via a copper-free “click chemistry” reaction to form a stable triazole and does not require Cu-catalyst or elevated temperatures.

AZDye™ 405 is a bright, blue-fluorescent probe optimally excited by the 407 nm spectral line of the krypton laser or the 408 nm violet laser diode. This probe is water-soluble and its fluorescence is pH independent over a wide pH range. The brightness and photostability of this dye are best suited to direct imaging of moderate-abundance targets.

AZDye™ 405 is structurally similar to Alexa Fluor® 405 or Cascade Blue, and spectrally is a match to DyLight® 405, Alexa Fluor® 405, CF® 405S Dye, Cascade Blue, or any other sulfonated pyrene based fluorescent dyes.

SPECIFICATIONS

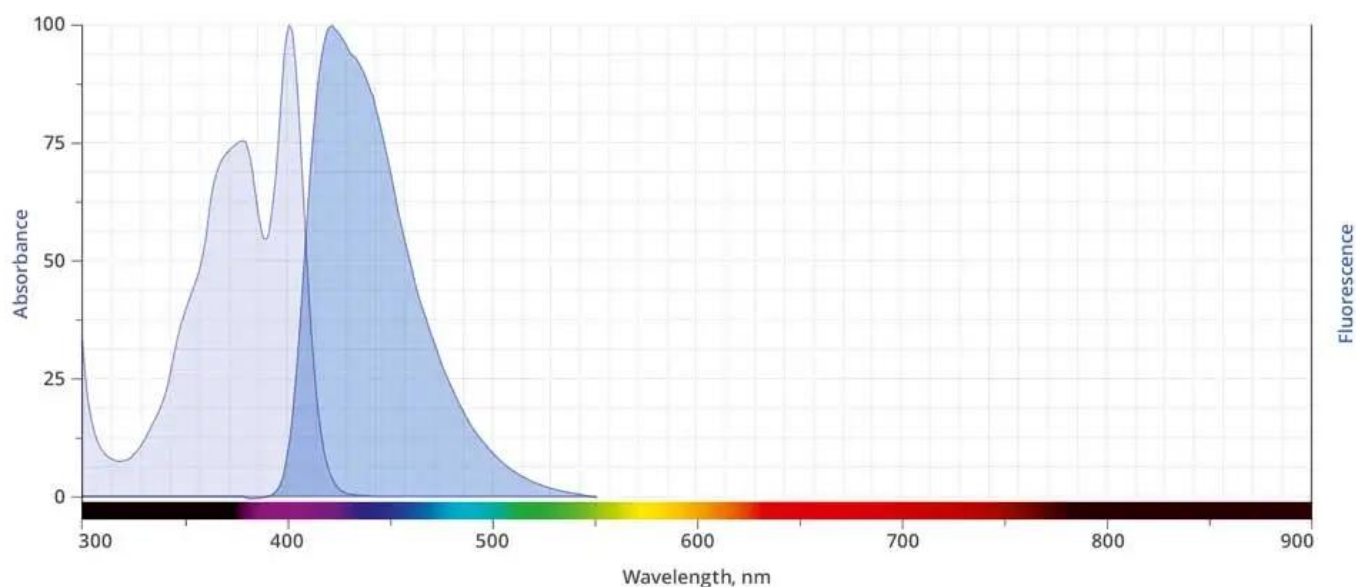
CAS Number	N/A
Molecular Weight	640.65 (protonated) 706.60 (sodium salt)
Appearance	Yellow solid
Extinction Coefficient	35,000

For research use only. Not intended for therapeutic or diagnostic use in animals or humans.



Purity	>95% (HPLC)
Unit Size	1 mg, 5 mg, 25 mg
Solubility	Water, DMSO, DMF
Storage Instructions	-20°C. Desiccate
Spectrally Similar Dyes	Alexa Fluor® 405, CF® 405, Cascade Blue®, DyLight® 405
Laser Line	405 nm
Excitation/Emission Maximum	402/424 nm
Shipping Conditions	Ambient temperature
Shipping Instructions	Ambient temperature

ABS/EM SPECTRA



SELECTED REFERENCES

1. Schuler, D., *et al.* (2021). Differential Labeling of Chemically Modified Peptides and Lipids among Cyanobacteria *Planktothrix* and *Microcystis*. *Microorganisms*, **9**, 1578. [[MDPI](#)]

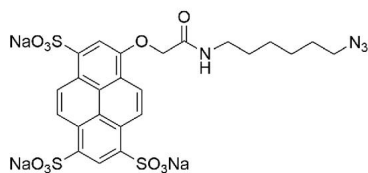
For research use only. Not intended for therapeutic or diagnostic use in animals or humans.



DOCUMENTS

- [Safety Data Sheet](#)
- [Download CoA](#)
- [Datasheet](#)

GALLERY IMAGES



For research use only. Not intended for therapeutic or diagnostic use in animals or humans.