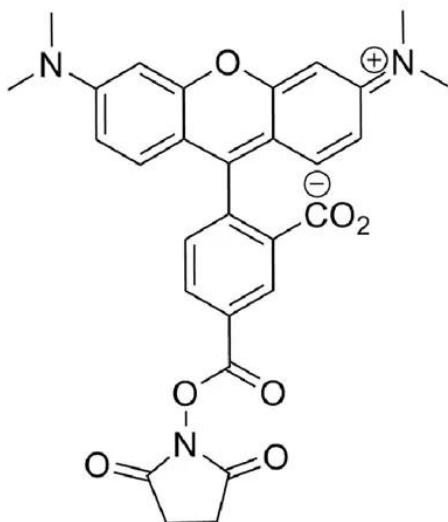




5-TAMRA NHS ESTER

SKU: FP-1255



DESCRIPTION

488/532



Laser line

TRITC



Common filter set

556



Excitation max

573



Emission max

5-TAMRA NHS Ester (5-Carboxytetramethylrhodamine) is a bright orange-fluorescent dye with excitation ideally suited to the 532 nm or 546 nm laser lines. This dye is supplied purified single isomer 5. 5-TAMRA NHS Ester has been used widely for preparing peptide, protein, nucleotide and nucleic acid conjugates, especially fluorescent antibodies and avidin derivatives used in

For research use only. Not intended for therapeutic or diagnostic use in animals or humans.



immunochemistry. The absorbance and emission maxima of TAMRA conjugates are 553 nm and 575 nm respectively.

5-TAMRA is more often used for labeling peptides and proteins. 6-TAMRA is predominately used for labeling nucleotides and sequencing nucleic acids. 5-TAMRA dye is a bright fluorescent label is compatible with various excitation sources including mercury arc, tungsten and xenon arc lamps, the 544 nm line of the Helium-Neon laser and the 532 nm green laser line.

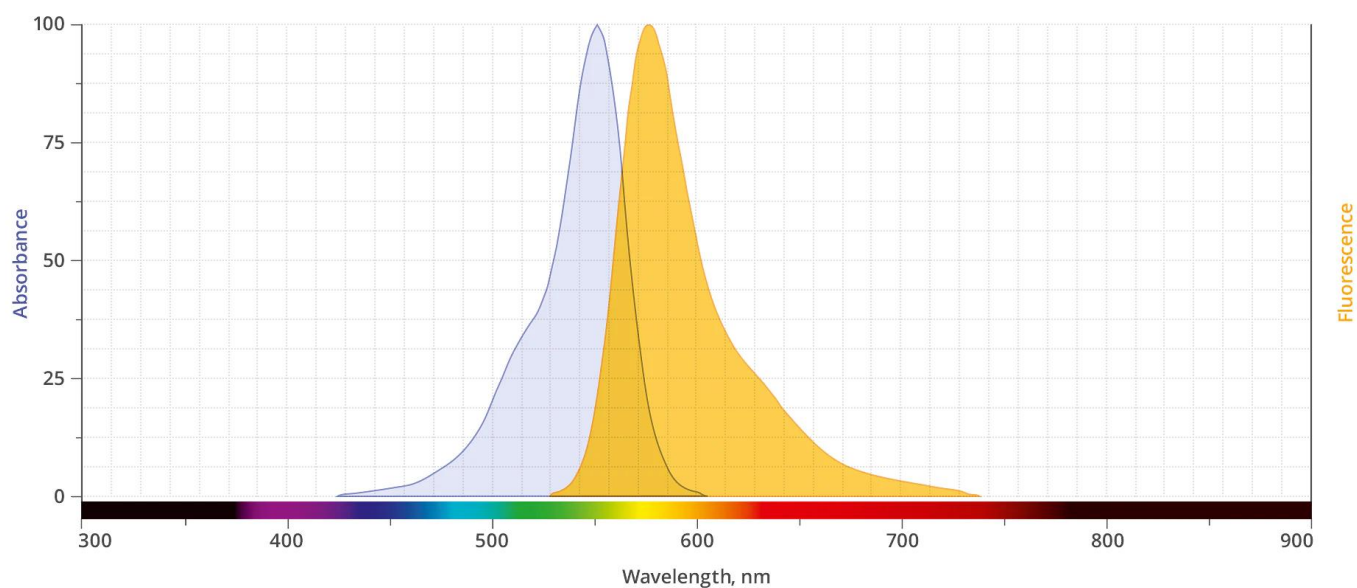
The NHS Ester reacts specifically and efficiently with a primary amine (e.g., side chain of lysine residues or aminosilane-coated surfaces) at pH 7-9 to form a stable, covalent amide bond. The NHS ester (or succinimidyl ester) is the most popular tool for conjugating dyes to the primary amines of protein or antibody (Lys), amine-modified oligonucleotides, and other amine-containing molecules.

SPECIFICATIONS

Molecular Weight	527.53
Extinction Coefficient	92,000 cm ⁻¹ M ⁻¹
Reactivity	Primary amines
Unit Size	25 mg, 100 mg, 1000 mg
Solubility	DMSO, DMF, MeOH
Storage Instructions	-20°C.
Spectrally Similar Dyes	Alexa Fluor® 546, TAMRA, CF™ 543, MB™ 543
Excitation/Emission Maximum	553/575 nm
Shipping Conditions	Ambient temperature
Shipping Instructions	Ambient temperature

ABS/EM SPECTRA

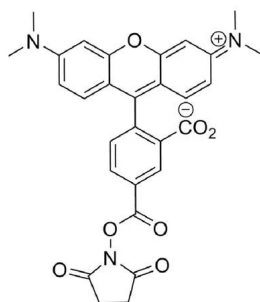
For research use only. Not intended for therapeutic or diagnostic use in animals or humans.



DOCUMENTS

- [Safety Data Sheet](#)
- [Datasheet](#)

GALLERY IMAGES



For research use only. Not intended for therapeutic or diagnostic use in animals or humans.