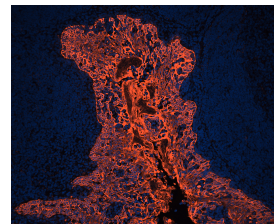
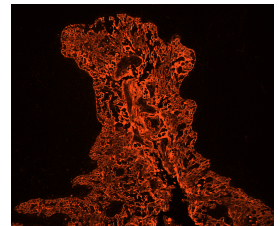
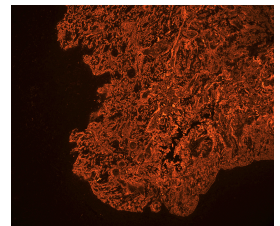
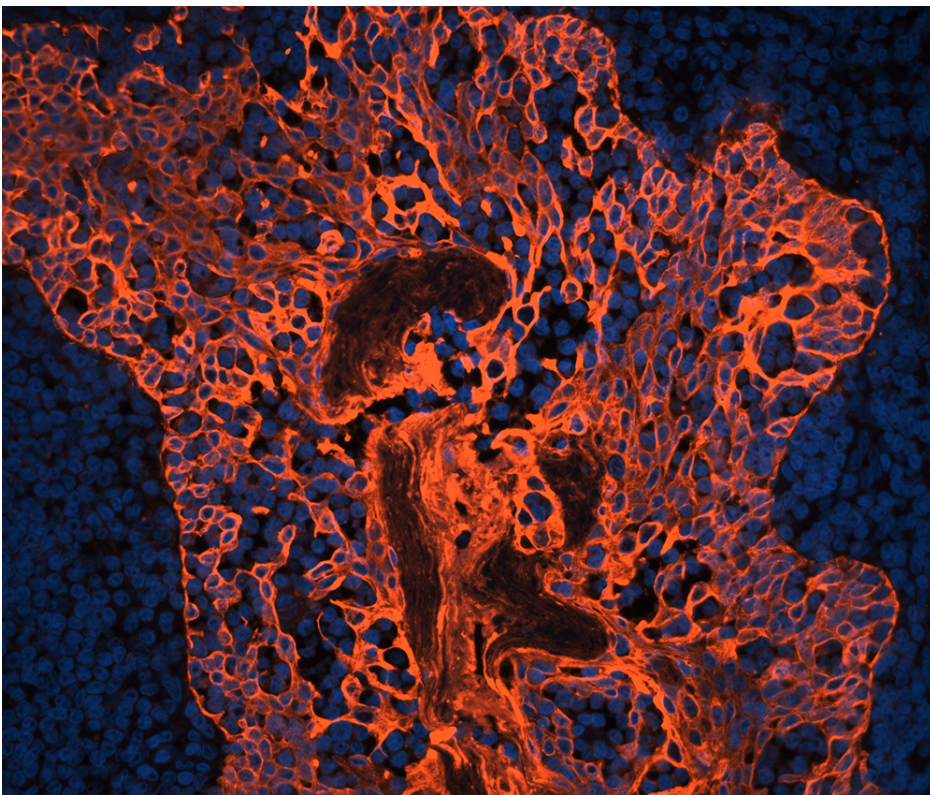


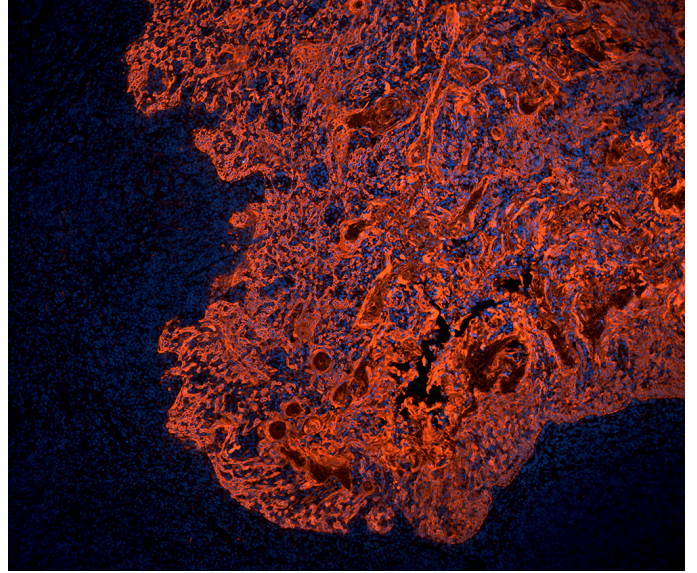
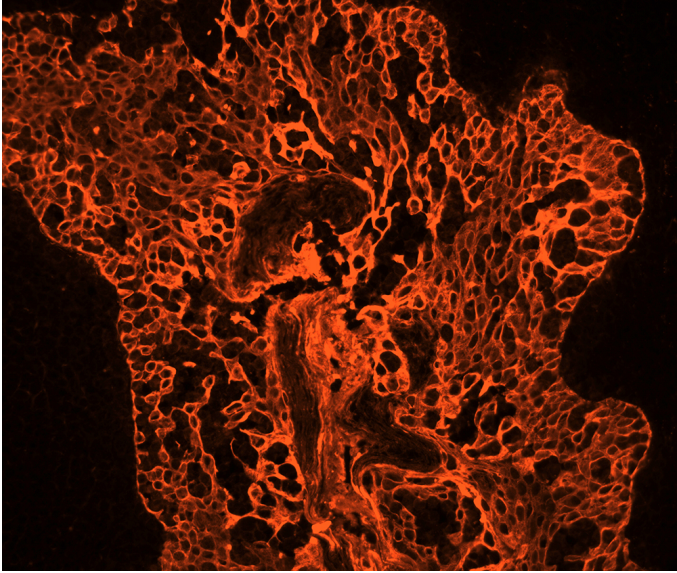


Streptavidin, CY3

SA-1300-1

Product Images





Short Description

Vector Laboratories fluorochrome-conjugated streptavidin and avidin reagents are highly purified and possess very low non-specific binding properties. They have extremely high affinity for biotin. These fluorescent conjugates can be used to detect biotinylated secondary antibodies and other macromolecules in applications such as immunofluorescence, in situ hybridization, or flow cytometry.

Amplification of fluorescent signals can be easily achieved with our biotinylated secondary antibodies followed by our highly purified fluorochrome-labeled streptavidin or avidin. Using a biotin/avidin or biotin/streptavidin detection system results in an additional layer of amplification over a directly conjugated secondary antibody.

- Excitation: 552 nm
- Emission: 565 nm
- Color: Red

Additional Information

Unit Size	1 mg
Applications	Immunofluorescence, In situ hybridization, Flow Cytometry/Cell Separation
Recommended Usage	Recommended concentration range for use 5-30 µg/ml Avoid using RPMI 1640 or other biotin-containing solutions as diluents. Serum also can contain biotin and should not be added to diluents.
Solution	10 mM HEPES, 0.15 M NaCl, pH 7.5, 0.08% sodium azide.
Maximum Excitation	550 nm
Maximum Emission	570 nm
Recommended Storage	2-8 °C
Concentration	1.0 mg/ml active conjugate
Conjugate	Cy3
Color of Fluorescence	Red
Format	Concentrate

