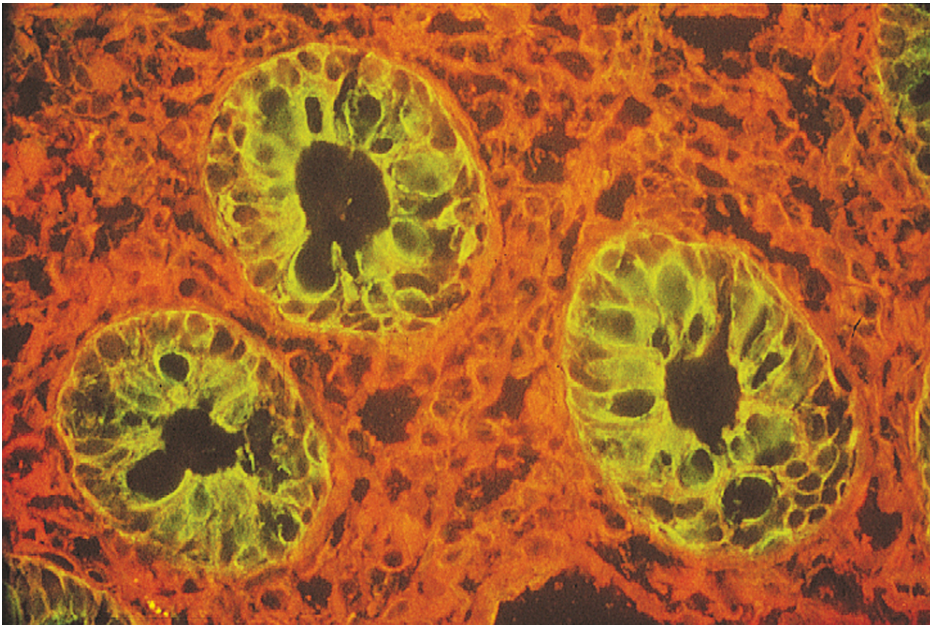




# Lycopersicon esculentum (Tomato) Lectin (LEL, TL), Fluorescein

## FL-1171-1

[Product Images](#)



## Short Description

---

Tomato lectin (from *Lycopersicon esculentum*) is an effective marker of blood vessels and microglial cells in rodents. Conjugation of the lectin with fluorescein facilitates fast, one-step detection and visualization using intravascular perfusion methods or direct application to tissue sections.

## Additional Information

---

Unit Size	1 mg
Applications	Immunofluorescence, Glycobiology
Recommended Usage	The recommended concentration range for use is 5-20 µg/ml.
Recommended Storage	2-8°C
Maximum Excitation	495-500 nm
Maximum Emission	514-521 nm
Solution	10 mM HEPES, 0.15 M NaCl, pH 7.5, 0.08% sodium azide, 0.1 mM CaCl <sub>2</sub> , 5mg/ml β cyclodextrin
Concentration	2 mg active conjugate/ml
Conjugate	Fluorescein
Color of Fluorescence	Green
Sugar Specificity	[GlcNAc]1-3, N-Acetylglucosamine

