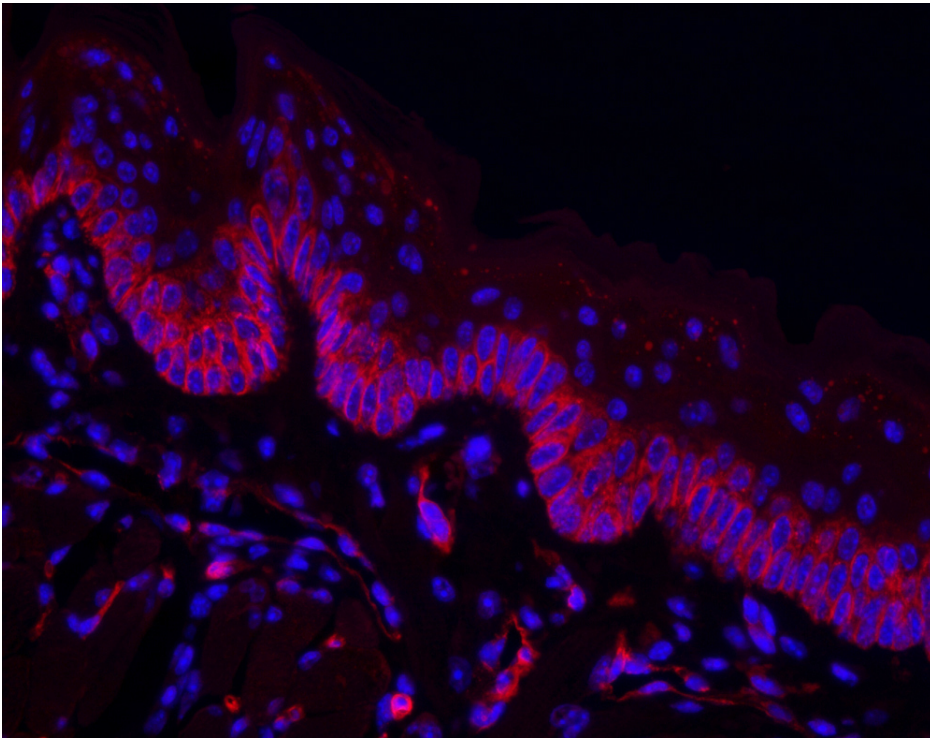




Griffonia Simplicifolia Lectin I (GSL I) Isolectin B4, DyLight™ 594

DL-1207-.5

[Product Images](#)



Short Description

GSL I-B₄ isolectin contains only the B subunits. It is a useful marker for endothelial cells from nonprimates such as mouse, rat, rabbit, and goat as well as a marker for non-peptidergic unmyelinated primary afferent neurons. This "B"-rich lectin preferentially agglutinates blood group B cells and is specific for α-galactose residues.

DyLight™ 594 GSL I-B₄ isolectin is produced by using special conjugation procedures to incorporate DyLight™ 594 into our affinity-purified lectin. This conjugate has an appropriate number of fluorochromes bound which provide the maximum fluorescence and optimum staining characteristics for this particular lectin. This reagent is supplied essentially free of unconjugated fluorochromes and inactive lectin.

Additional Information

Unit Size	0.5 mg
Applications	Immunofluorescence, Glycobiology
Recommended Usage	The recommended concentration range for use is 5-20 µg/ml.
Recommended Storage	2-8 °C
Maximum Excitation	592 nm
Inhibiting and/or Eluting Sugar	Inhibiting Sugar: 500 mM galactose (S-9003) or 100 mM raffinose.
Maximum Emission	617 nm
Solution	10 mM HEPES, 0.15 M NaCl, pH 7.5, 0.08% sodium azide, 0.1 mM CaCl ₂ .
Concentration	1 mg active conjugate/ml
Conjugate	DyLight 594
Color of Fluorescence	Red
Sugar Specificity	Galactose

