



CERTIFICATE OF ANALYSIS

Product **BIOTINYLATED PROTEIN MOLECULAR WEIGHT MARKERS**

Catalog No.: SP-1400

Lot No. ZE0221

Biotinylated protein (b-protein) molecular weight markers offer a simple means for obtaining estimates of the sizes of proteins directly from a Western blot. Using these markers, estimates can be obtained for proteins of molecular weights from 20,000 to 132,000. The pattern of bands seen below are obtained when the markers are run on a 7.5%, 12% or 4-12% gradient acrylamide gel. Variations may occur in some of the molecular weights if buffer systems other than what is listed are used. The 12% gel is missing the largest molecular weight marker (myosin). The transfer of myosin to a blot is very poor at this concentration of acrylamide and does not reproduce very well for publication.

Acrylamide Concentrations:

7.5%

12%

4-12%

Running Buffers:

0.1% SDS
25mM Tris-HCl
192mM Glycine

0.1% SDS
25mM Tris-HCl
192mM Glycine

0.1% SDS
50mM Tris-base
50mM MOPS

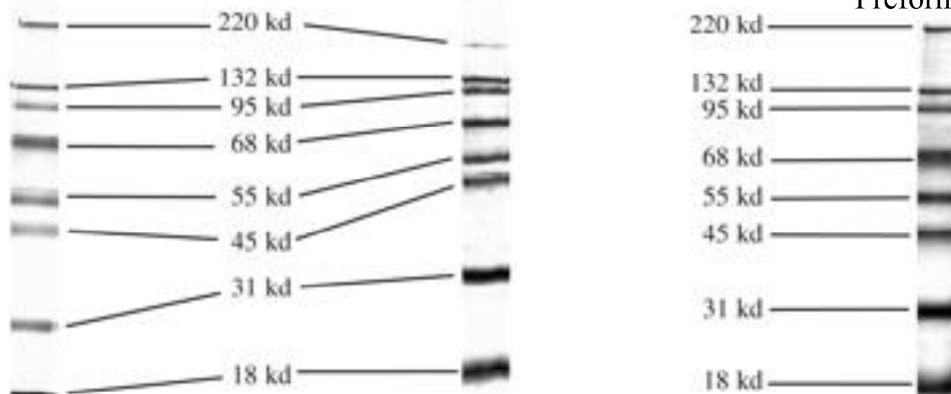
Gel Buffers:

Tris-HCl pH 8.8

Tris-HCl pH 8.8

Bis-Tris

Preformed Gels



Vector Laboratories, Inc., 30 Ingold Road, Burlingame, CA 94010 U.S.A.

Tel: (650)697-3600 • Fax: (650)697-0339 • Email: vector@vectorlabs.com • Web: www.vectorlabs.com