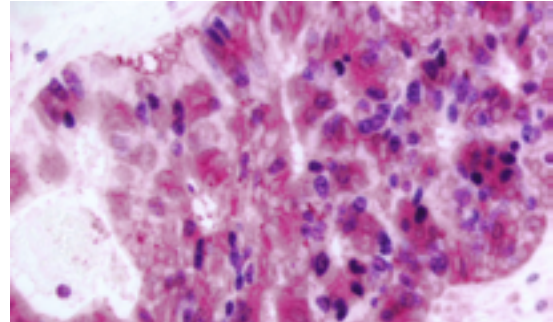


ImmPRESS®-AP Horse Anti-Rabbit IgG Polymer Kit Alkaline Phosphatase

Cat. No.: MP-5401

Storage: 2-8 °C

Instructions for Immunohistochemical staining using rabbit primary antibodies.



Colon Cancer (double label): Ki67 (rm) detected with ImmPRESS-AP Anti-Rabbit IgG and Vector Blue Substrate (blue); Cox2 (rm) detected with ImmPRESS-AP Anti-Rabbit IgG and ImmPACT Vector Red Substrate (red). No Counterstain.

DESCRIPTION

The ImmPRESS-AP Polymer Kit is an enzymatic, non-biotin amplification system that produces crisp, highly sensitive, specific staining with low background.

The reagents in the ImmPRESS-AP Polymer Kit are ready-to-use — no mixing or titering is necessary to obtain optimal staining. Dilution of the reagents or changes in suggested incubation time may affect performance. The reagents are supplied in convenient dropper bottles.

A number of different wash buffers can be used with the ImmPRESS reagents. One of the most common is 10 mM sodium phosphate, pH 7.5, 0.9% saline (PBS). 0.1% Tween 20 detergent may be added to the wash buffer and is especially recommended for use with automated stainers.

KIT COMPONENTS

<u>Product Name</u>	<u>Volume</u>
Normal Horse Serum, 2.5%	15 ml or 50 ml
ImmPRESS-AP Horse Anti-Rabbit IgG Polymer Reagent	15 ml or 50 ml

The ImmPRESS-AP Polymer (15 ml) Kit will stain approximately 75-150 sections and the ImmPRESS-AP Polymer (50 ml) Kit will stain approximately 250-500 sections.

STORAGE:

- Store reagents in original bottles at 2-8 °C
- Do not freeze.

STAINING PROCEDURE

1. For paraffin sections, deparaffinize and hydrate tissue sections through xylenes or other clearing agents and graded alcohol series.

For frozen sections or cell preparations fix with acetone or an appropriate fixative for the antigen under study, if necessary.

Wash for 5 minutes in tap water.

2. If antigen unmasking is required, perform this procedure using a Vector® Antigen Unmasking Solution, Citrate-based, pH 6.0 (H-3300) or Tris-based, pH 9.0 (H-3301).
3. If quenching of endogenous enzyme activity is required, incubate the sections in BLOXALL® Blocking Solution (SP-6000) for 10 minutes.
4. Wash in buffer for 5 minutes.
5. Incubate sections for 20 minutes with Normal Horse Serum, 2.5%.
6. Tip off excess serum from sections.
7. Incubate with rabbit primary antibody diluted in appropriate antibody diluent solution, such as diluted normal horse serum or BSA.
8. Wash in buffer for 5 minutes.
9. Incubate for 30 minutes with ImmPRESS-AP Polymer Reagent.
10. Wash for 2 x 5 minutes in buffer.
11. Incubate in alkaline phosphatase substrate solution (not included) until desired stain intensity develops.
12. Rinse sections in tap water.
13. Counterstain (optional), clear and mount.

Detailed product listings, specifications, protocols and additional information is available on our website: vectorlabs.com