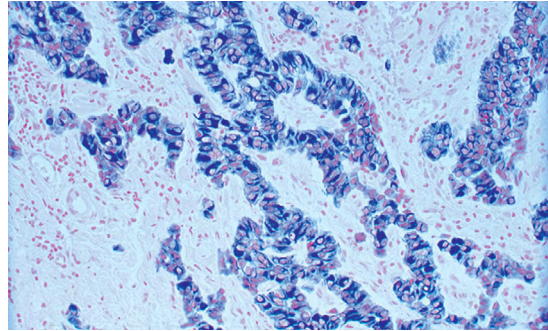


## NUCLEAR FAST RED

**Cat. No.:** H-3403

**Storage:** 15°C to 25°C



*Tumor section showing specific cytoplasmic cell staining with Vector® SG Substrate (blue/gray). Counterstained with Nuclear Fast Red (red).*

### DESCRIPTION

This ready-to-use nuclear counterstain is designed to be used after completion of immunohistochemical staining or for routine histology. Nuclei in stained sections will be pink to light red.

### COMPONENTS

<u>Product Name</u>	<u>Volume</u>
Nuclear Fast Red	500 ml

### INSTRUCTIONS FOR USE:

1. Rinse slides in tap water.
2. Immerse slides in Vector® Nuclear Fast Red Counterstain or apply counterstain directly to slide, completely covering the tissue section.
3. Incubate sections for 1-10 minutes to obtain desired stain intensity.
4. Wash slides in tap water for 10 minutes. Washing for longer than 10 minutes may lead to decreased counterstain intensity.
5. Dehydrate, clear, and mount.

### NOTES

Counterstains should be optimized for each tissue type, antigen unmasking protocol, and immunocytochemical staining intensity desired.

A precipitate may form in this product over time. This will not affect staining efficacy. If preferred, product can be filtered immediately before use.

See reverse side for substrate compatibility.

Use ordinary precautions to avoid contact with skin and eyes.

## Counterstain/Substrate Compatibility Table

This table is designed as a reference to determine the optimal counterstain/substrate combination for your application. Considerations should be given to tissue type, antigen unmasking protocol and other detection parameters to achieve the desired staining intensity.

Substrate	Catalog Number	Hematoxylin and Hematoxylin QS H-3401 and H-3404	Methyl Green H-3402	Nuclear Fast Red H-3403
ImmPACT DAB (brown)	SK-4105	Excellent Contrast	Excellent Contrast	Fair Contrast
ImmPACT DAB EqV	SK-4103	Excellent Contrast	Excellent Contrast	Fair Contrast
DAB (brown)	SK-4100	Excellent Contrast	Excellent Contrast	Fair Contrast
DAB-Ni (gray-black)	SK-4100	Excellent Contrast	Fair Contrast *	Good Contrast
ImmPACT AEC (red)	SK-4205	Excellent Contrast	Counterstain Incompatibility **	Color Incompatibility
ImmPACT AMEC Red (red)	SK-4285	Excellent Contrast	Counterstain Incompatibility **	Color Incompatibility
AEC (red)	SK-4200	Excellent Contrast	Counterstain Incompatibility **	Color Incompatibility
TMB (blue)	SK-4400	Color Incompatibility	Counterstain Incompatibility	Excellent Contrast
ImmPACT VIP (purple)	SK-4605	Fair Contrast	Excellent Contrast	Poor Contrast
Vector VIP (purple)	SK-4600	Fair Contrast	Excellent Contrast	Poor Contrast
ImmPACT SG (blue-gray)	SK-4705	Poor Contrast	Good Contrast	Excellent Contrast
SG (blue-gray)	SK-4700	Poor Contrast	Good Contrast	Excellent Contrast
ImmPACT NovaRED (red)	SK-4805	Excellent Contrast	Excellent Contrast ***	Color Incompatibility
Vector NovaRED (red)	SK-4800	Excellent Contrast	Excellent Contrast ***	Color Incompatibility
ImmPACT Vector Red (magenta)	SK-5105	Excellent Contrast	Excellent Contrast	Color Incompatibility
Vector Red (magenta)	SK-5100	Excellent Contrast	Excellent Contrast	Color Incompatibility
Vector Black (black)	SK-5200	Excellent Contrast	Excellent Contrast *	Excellent Contrast
Vector Blue (blue)	SK-5300	Color Incompatibility	Good Contrast	Excellent Contrast
BCIP/NBT (indigo)	SK-5400	Color Incompatibility	Excellent Contrast *	Excellent Contrast

\* This substrate shows a slight decrease in sensitivity following the methyl green protocol. This decrease can be minimized by reducing the heat incubation and acetone rinse times in the methyl green protocol.

\*\* Substrate dissolves in acetone wash.

\*\*\* A slight color change in ImmPACT NovaRED and Vector NovaRED reaction product may be seen using methyl green.